

## SLFN5 Antibody

Catalog No: #47209

Orders: [order@signalwayantibody.com](mailto:order@signalwayantibody.com)Support: [tech@signalwayantibody.com](mailto:tech@signalwayantibody.com)

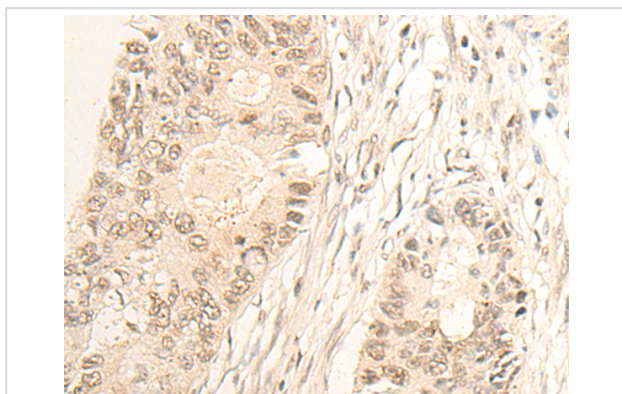
## Description

Product Name	SLFN5 Antibody
Host Species	Rabbit
Clonality	Polyclonal
Purification	Antigen affinity purification
Applications	IHC
Species Reactivity	Hu
Specificity	The antibody detects endogenous levels of total SLFN5 protein.
Immunogen Description	Fusion protein of human SLFN5
Target Name	SLFN5
Accession No.	Swiss-Prot#:Q08AF3NCBI Gene ID:162394Gene Accssion:BC021238
Uniprot	Q08AF3
GeneID	162394;
Concentration	0.6mg/ml
Formulation	Rabbit IgG in pH7.4 PBS, 0.05% NaN <sub>3</sub> , 40% Glycerol.
Storage	Store at -20C

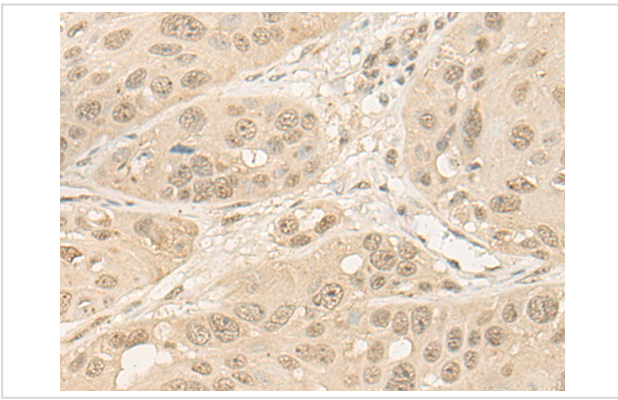
## Application Details

IHC:1: 25-100

## Images



The image is immunohistochemistry of paraffin-embedded Human colorectal cancer tissue using 47209(SLFN5 Antibody) at dilution 1/20. (Original magnification: ?00)



The image is immunohistochemistry of paraffin-embedded Human esophagus cancer tissue using 47209(SLFN5 Antibody) at dilution 1/20. (Original magnification: ?00)

## Background

Slfn5 (schlafen family member 5) is an 891 amino acid protein that exists as multiple alternatively spliced isoforms and is thought to play a role in hematopoietic cell differentiation. The gene encoding Slfn5 maps to human chromosome 17, which comprises over 2.5% of the human genome and encodes over 1,200 genes. Two key tumor suppressor genes are associated with chromosome 17, namely, p53 and BRCA1. Tumor suppressor p53 is necessary for maintenance of cellular genetic integrity by moderating cell fate through DNA repair versus cell death. Malfunction or loss of p53 expression is associated with malignant cell growth and Li-Fraumeni syndrome. Like p53, BRCA1 is directly involved in DNA repair, though specifically it is recognized as a genetic determinant of early onset breast cancer and predisposition to cancers of the ovary, colon, prostate gland and fallopian tubes.

Note: This product is for in vitro research use only