

RALA antibody

Catalog No: #22525

Orders: order@signalwayantibody.com

Support: tech@signalwayantibody.com

Description

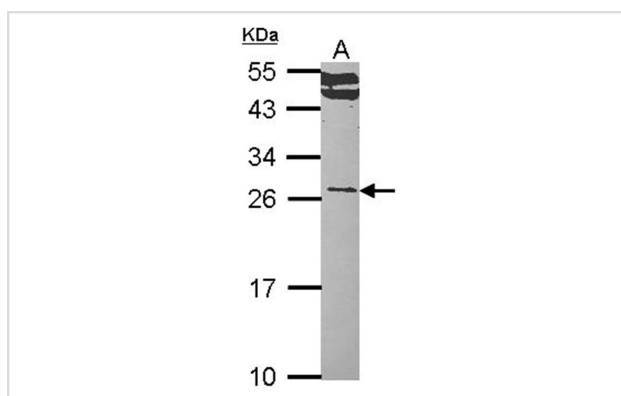
Product Name	RALA antibody
Host Species	Rabbit
Clonality	Polyclonal
Purification	Purified by antigen-affinity chromatography.
Applications	WB
Species Reactivity	Hu
Immunogen Type	Recombinant protein
Immunogen Description	Recombinant protein fragment contain a sequence corresponding to a region within amino acids 1 and 179 of RALA
Target Name	RALA
Accession No.	Swiss-Prot:P11233Gene ID:5898
Uniprot	P11233
GeneID	5898;
Concentration	0.6mg/ml
Formulation	Supplied in 0.1M Tris-buffered saline with 20% Glycerol (pH7.0). 0.01% Thimerosal was added as a preservative.
Storage	Store at -20°C for long term preservation (recommended). Store at 4°C for short term use.

Application Details

Predicted MW: 24kd

Western blotting: 1:500-1:3000

Images



Sample (30 ug of whole cell lysate)
 A: Hep G2
 12% SDS PAGE
 RALA antibody diluted at 1: 1000

Background

The product of this gene belongs to the small GTPase superfamily, Ras family of proteins. GTP-binding proteins mediate the transmembrane signaling initiated by the occupancy of certain cell surface receptors. This gene encodes a low molecular mass ras-like GTP-binding protein that shares about

50% similarity with other ras proteins. [provided by RefSeq]

Note: This product is for in vitro research use only