

## SSBP1 Antibody

Catalog No: #40338

Orders: order@signalwayantibody.com

Support: tech@signalwayantibody.com

## Description

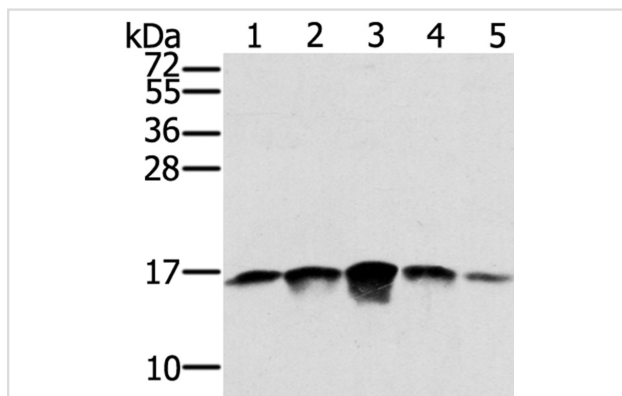
Product Name	SSBP1 Antibody
Host Species	Rabbit
Clonality	Polyclonal
Purification	Antigen affinity purification.
Applications	WB IHC
Species Reactivity	Hu
Specificity	The antibody detects endogenous levels of total SSBP1 protein.
Immunogen Type	Protein
Immunogen Description	Full length fusion protein
Target Name	SSBP1
Other Names	SSBP; mtSSB; Mt-SSB; SOSS-B1
Accession No.	Swiss-Prot:Q04837 Gene Accssion:BC000895
Uniprot	Q04837
GeneID	6742;
SDS-PAGE MW	17KD
Concentration	1.6mg/ml
Formulation	Rabbit IgG in pH7.4 PBS, 0.05% NaN <sub>3</sub> , 40% Glycerol.
Storage	Store at -20°C

## Application Details

Western blotting: 1:500-1:2000

Immunohistochemistry:1:25-1:100

## Images



Gel: 12%SDS-PAGE

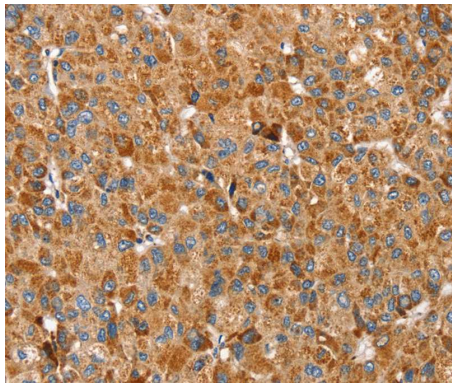
Lysates (from left to right): PC3, A549, K562, A375 and hela cell

Amount of lysate: 40ug per lane

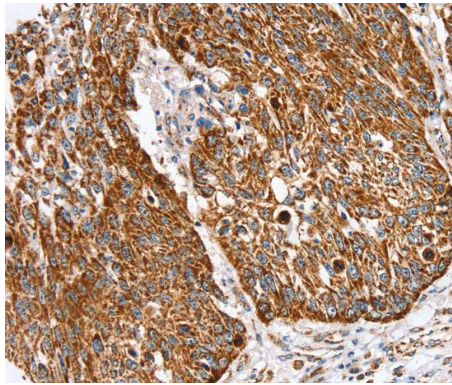
Primary antibody: 1/400 dilution

Secondary antibody dilution: 1/8000

Exposure time: 1 minute



Immunohistochemical analysis of paraffin-embedded Human liver cancer tissue using #40338 at dilution 1/30.



Immunohistochemical analysis of paraffin-embedded Human lung cancer tissue using #40338 at dilution 1/30.

## Background

SSBP1 is a housekeeping gene involved in mitochondrial biogenesis (Tiranti et al., 1995 [PubMed 7789991]). It is also a subunit of a single-stranded DNA (ssDNA)-binding complex involved in the maintenance of genome stability.

Note: This product is for in vitro research use only