

MED22 Antibody

Catalog No: #40342

Orders: order@signalwayantibody.com

Support: tech@signalwayantibody.com

Description

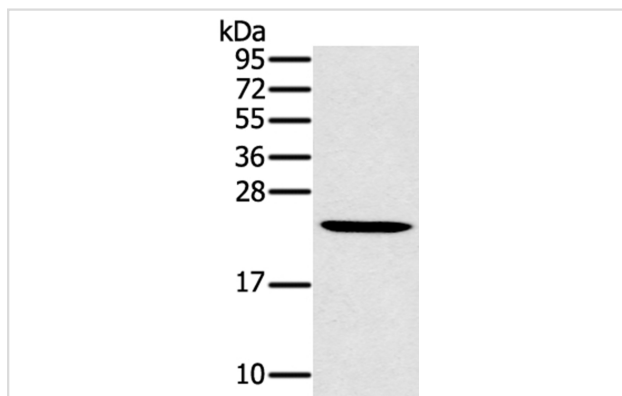
Product Name	MED22 Antibody
Host Species	Rabbit
Clonality	Polyclonal
Purification	Antigen affinity purification.
Applications	WB IHC
Species Reactivity	Hu Ms
Specificity	The antibody detects endogenous levels of total MED22 protein.
Immunogen Type	Protein
Immunogen Description	Full length fusion protein
Target Name	MED22
Other Names	MED24; SURF5; surf-5
Accession No.	Swiss-Prot:Q15528Gene Accssion:BC040111
Uniprot	Q15528
GeneID	6837;
SDS-PAGE MW	22KD
Concentration	2.2mg/ml
Formulation	Rabbit IgG in pH7.4 PBS, 0.05% NaN ₃ , 40% Glycerol.
Storage	Store at -20°C

Application Details

Western blotting: 1:500-1:2000

Immunohistochemistry: 1:100-1:200

Images

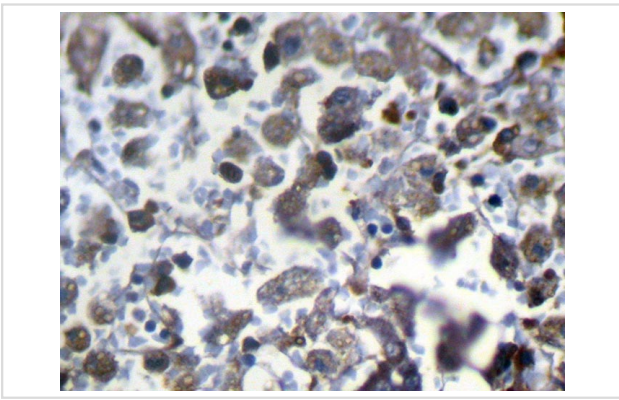


Gel: 12%SDS-PAGE

Lysate: 40ug Mouse liver tissuePrimary antibody: 1/800 dilution

Secondary antibody dilution: 1/8000

Exposure time: 15 seconds



Immunohistochemical analysis of paraffin-embedded Human Liver cancer tissue using #40342 at dilution 1/100.

Background

This gene encodes a protein component of the mediator complex, which functions in the regulation of transcription by bridging interactions between gene-specific regulatory factors, RNA polymerase II, and general transcription factors. Alternatively spliced transcript variants encoding different isoforms have been observed.

Note: This product is for in vitro research use only