

Description

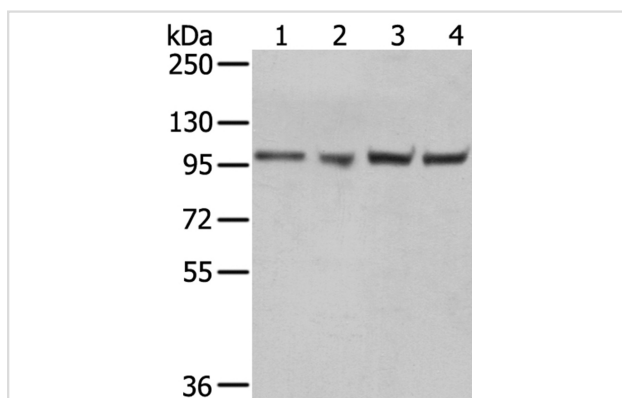
Product Name	TPX2 Antibody
Host Species	Rabbit
Clonality	Polyclonal
Purification	Antigen affinity purification.
Applications	WB IHC
Species Reactivity	Hu
Specificity	The antibody detects endogenous levels of total TPX2 protein.
Immunogen Type	Protein
Immunogen Description	Fusion protein of human TPX2, microtubule-associated
Target Name	TPX2
Other Names	DIL2; p100; DIL-2; HCTP4; FLS353; HCA519; REPP86; C20orf1; C20orf2; GD:C20orf1
Accession No.	Swiss-Prot:Q9ULW0Gene Accssion:BC004136
Uniprot	Q9ULW0
GeneID	22974;
SDS-PAGE MW	86KD
Concentration	2.2mg/ml
Formulation	Rabbit IgG in pH7.4 PBS, 0.05% NaN ₃ , 40% Glycerol.
Storage	Store at -20°C

Application Details

Western blotting: 1:500-1:2000

Immunohistochemistry:1:30-1:150

Images



Gel: 6%SDS-PAGE

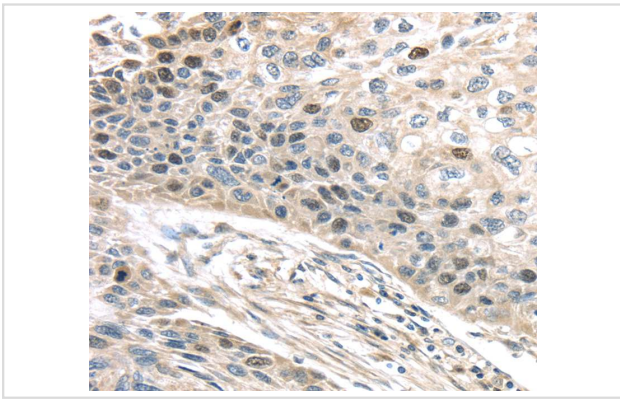
Lysates (from left to right): A431, 293T, hela and K562 cell

Amount of lysate: 40ug per lane

Primary antibody: 1/800 dilution

Secondary antibody dilution: 1/8000

Exposure time: 10 seconds



Immunohistochemical analysis of paraffin-embedded Human esophagus cancer tissue using #40347 at dilution 1/40.

Background

Spindle assembly factor. Required for normal assembly of mitotic spindles. Required for normal assembly of microtubules during apoptosis. Required for chromatin and/or kinetochore dependent microtubule nucleation. Mediates AURKA localization to spindle microtubules. Activates AURKA by promoting its autophosphorylation at 'Thr-288' and protects this residue against dephosphorylation.

Note: This product is for in vitro research use only