

LPAR1 Antibody

Catalog No: #40360

Orders: order@signalwayantibody.comSupport: tech@signalwayantibody.com

Description

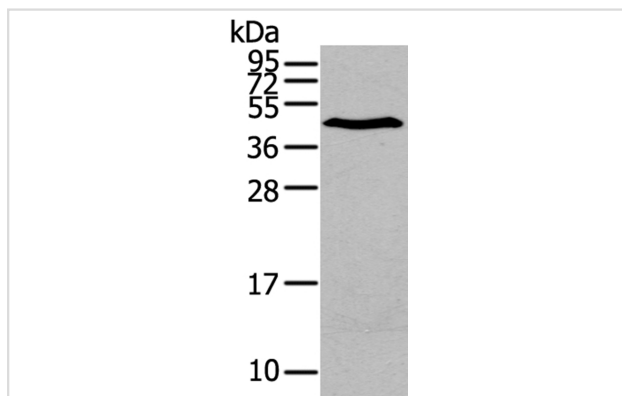
| | |
|-----------------------|---|
| Product Name | LPAR1 Antibody |
| Host Species | Rabbit |
| Clonality | Polyclonal |
| Purification | Antigen affinity purification. |
| Applications | WB IHC |
| Species Reactivity | Hu |
| Specificity | The antibody detects endogenous levels of total LPAR1 protein. |
| Immunogen Type | Peptide |
| Immunogen Description | Synthetic peptide of human lysophosphatidic acid receptor 1 |
| Target Name | LPAR1 |
| Other Names | EDG2; LPA1; VZG1; GPR26; edg-2; vzg-1; Gpcr26; Mrec1.3; rec.1.3 |
| Accession No. | Swiss-Prot:Q92633Gene Accssion:NP_001392 |
| Uniprot | Q92633 |
| GeneID | 1902; |
| SDS-PAGE MW | 41KD |
| Concentration | 1mg/ml |
| Formulation | Rabbit IgG in pH7.4 PBS, 0.05% NaN ₃ , 40% Glycerol. |
| Storage | Store at -20°C |

Application Details

Western blotting: 1:200-1:1000

Immunohistochemistry:1:25-1:100

Images

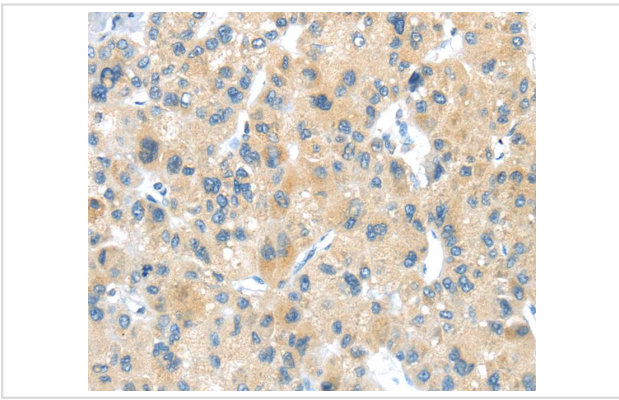


Gel: 12%SDS-PAGE

Lysate: 40ug A375 cellPrimary antibody: 1/200 dilution

Secondary antibody dilution: 1/8000

Exposure time: 2 minutes



Immunohistochemical analysis of paraffin-embedded Human liver cancer tissue using #40360 at dilution 1/20.

Background

The integral membrane protein encoded by this gene is a lysophosphatidic acid (LPA) receptor from a group known as EDG receptors. These receptors are members of the G protein-coupled receptor superfamily. Utilized by LPA for cell signaling, EDG receptors mediate diverse biologic functions, including proliferation, platelet aggregation, smooth muscle contraction, inhibition of neuroblastoma cell differentiation, chemotaxis, and tumor cell invasion.

Note: This product is for in vitro research use only