

LOXL3 Antibody

Catalog No: #40361

Orders: order@signalwayantibody.comSupport: tech@signalwayantibody.com

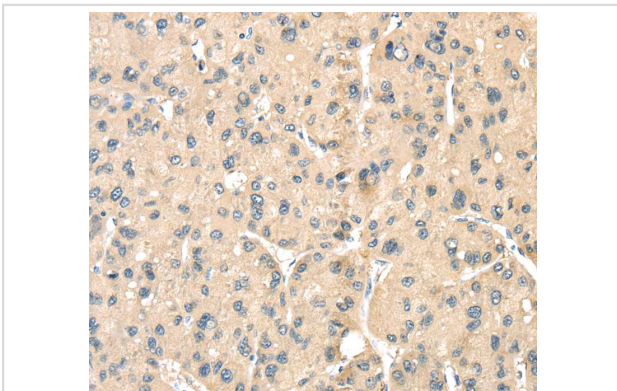
Description

Product Name	LOXL3 Antibody
Host Species	Rabbit
Clonality	Polyclonal
Purification	Antigen affinity purification.
Applications	IHC
Species Reactivity	Hu Ms
Specificity	The antibody detects endogenous levels of total LOXL3 protein.
Immunogen Type	Peptide
Immunogen Description	Synthetic peptide corresponding to residues near the C terminal of human lysyl oxidase-like 3
Target Name	LOXL3
Other Names	LOXL
Accession No.	Swiss-Prot:P58215Gene Accssion:NP_115992
Uniprot	P58215
GeneID	84695;
Concentration	2.3mg/ml
Formulation	Rabbit IgG in pH7.4 PBS, 0.05% NaN ₃ , 40% Glycerol.
Storage	Store at -20°C

Application Details

Immunohistochemistry:1:25-1:100

Images



Immunohistochemical analysis of paraffin-embedded Human liver cancer tissue using #40361 at dilution 1/35.

Background

This gene encodes a member of the lysyl oxidase gene family. The prototypic member of the family is essential to the biogenesis of connective tissue, encoding an extracellular copper-dependent amine oxidase that catalyses the first step in the formation of crosslinks in collagens and elastin. A highly conserved amino acid sequence at the C-terminus end appears to be sufficient for amine oxidase activity, suggesting that each family member may retain this function. The N-terminus is poorly conserved and may impart additional roles in developmental regulation, senescence, tumor suppression,

cell growth control, and chemotaxis to each member of the family. Alternatively spliced transcript variants of this gene have been reported but their full-length nature has not been determined.

Note: This product is for in vitro research use only