

SLC16A9 Antibody

Catalog No: #40369

Orders: order@signalwayantibody.com

Support: tech@signalwayantibody.com

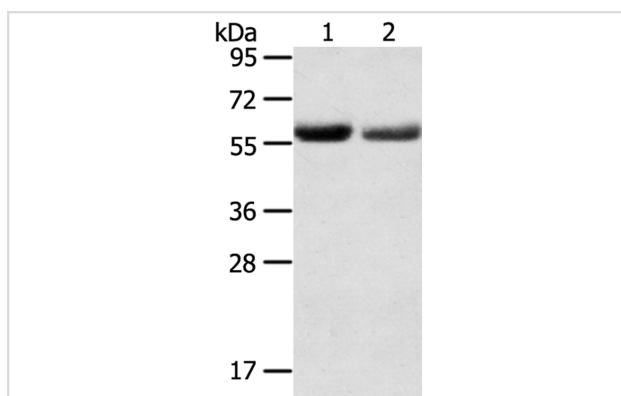
Description

Product Name	SLC16A9 Antibody
Host Species	Rabbit
Clonality	Polyclonal
Purification	Antigen affinity purification.
Applications	WB
Species Reactivity	Hu
Specificity	The antibody detects endogenous levels of total SLC16A9 protein.
Immunogen Type	Peptide
Immunogen Description	Synthetic peptide corresponding to residues near the C terminal of human solute carrier family 16, member 9p
Target Name	SLC16A9
Other Names	solute carrier family 16, member 9p
Accession No.	Swiss-Prot:Q7RTY1 Gene Accssion:NP_919274
Uniprot	Q7RTY1
GeneID	220963;
SDS-PAGE MW	56KD
Concentration	1.6mg/ml
Formulation	Rabbit IgG in pH7.4 PBS, 0.05% NaN ₃ , 40% Glycerol.
Storage	Store at -20°C

Application Details

Western blotting: 1:500-1:2000

Images



Gel: 8%SDS-PAGE
 Lysates (from left to right): Human normal stomach and stomach cancer tissue
 Amount of lysate: 60ug per lane
 Primary antibody: 1/200 dilution
 Secondary antibody dilution: 1/8000
 Exposure time: 5 minutes

Background

MCT9 (monocarboxylate transporter 9), also known as SLC16A9 (solute carrier family 16, member 9 (monocarboxylic acid transporter 9)) or C10orf36, is a 509 amino acid multi-pass membrane protein that belongs to the major facilitator superfamily. Like other MCT proteins, MCT9 functions as a

monocarboxylate transporter that catalyzes the rapid proton-linked transport of monocarboxylates across the plasma membrane.

Note: This product is for in vitro research use only