

SPON1 Antibody

Catalog No: #40372

Orders: order@signalwayantibody.com

Support: tech@signalwayantibody.com

Description

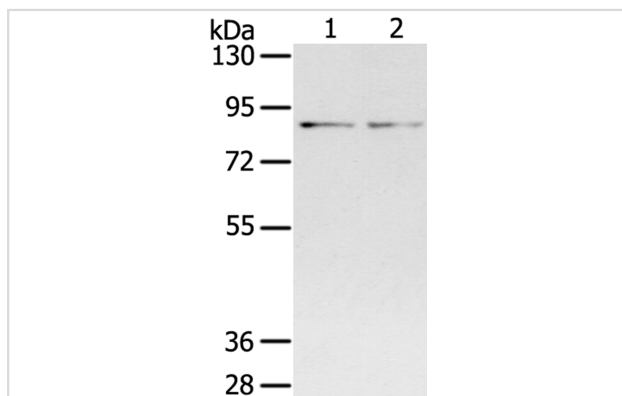
Product Name	SPON1 Antibody
Host Species	Rabbit
Clonality	Polyclonal
Purification	Antigen affinity purification.
Applications	WB IHC
Species Reactivity	Hu Ms Rt
Specificity	The antibody detects endogenous levels of total SPON1 protein.
Immunogen Type	Peptide
Immunogen Description	Synthetic peptide corresponding to residues near the C terminal of human spondin 1, extracellular matrix protein
Target Name	SPON1
Other Names	f-spondin; VSGP/F-spondin
Accession No.	Swiss-Prot:Q9HCB6Gene Accssion:NP_006099
Uniprot	Q9HCB6
GeneID	10418;
SDS-PAGE MW	91KD
Concentration	1.9mg/ml
Formulation	Rabbit IgG in pH7.4 PBS, 0.05% NaN ₃ , 40% Glycerol.
Storage	Store at -20°C

Application Details

Western blotting: 1:200-1:1000

Immunohistochemistry:1:25-1:100

Images



Gel: 6%SDS-PAGE

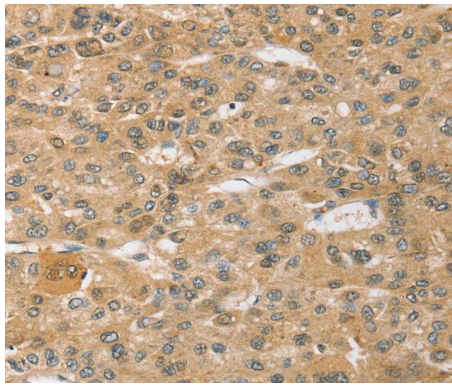
Lysates (from left to right): Mouse brain and lung tissue

Amount of lysate: 40ug per lane

Primary antibody: 1/400 dilution

Secondary antibody dilution: 1/8000

Exposure time: 2 minutes



Immunohistochemical analysis of paraffin-embedded Human liver cancer tissue using #40372 at dilution 1/30.

Background

F-Spondin, also designated Spondin-1 or vascular smooth muscle growth-promoting factor, is a member of the subgroup of the Thrombospondin type 1 class molecules. F-Spondin is a secreted, extracellular matrix-attached protein which patterns axonal trajectories by promoting adhesion and outgrowth of commissural axons, in addition to inhibiting outgrowth of motor axons.?

Note: This product is for in vitro research use only