

SRGAP2 Antibody

Catalog No: #40373

Orders: order@signalwayantibody.comSupport: tech@signalwayantibody.com

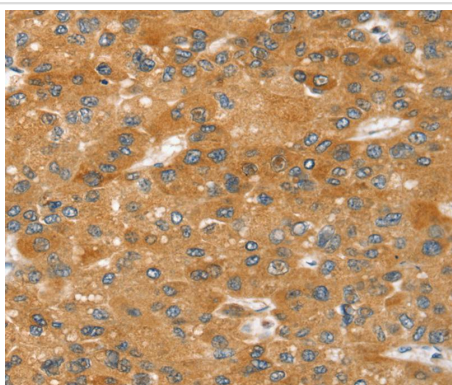
Description

Product Name	SRGAP2 Antibody
Host Species	Rabbit
Clonality	Polyclonal
Purification	Antigen affinity purification.
Applications	IHC
Species Reactivity	Hu Ms Rt
Specificity	The antibody detects endogenous levels of total SRGAP2 protein.
Immunogen Type	Peptide
Immunogen Description	Synthetic peptide corresponding to a region derived from internal residues of human SLIT-ROBO Rho GTPase activating protein 2
Target Name	SRGAP2
Other Names	FNBP2; SRGAP3; SRGAP2A; ARHGAP34
Accession No.	Swiss-Prot:O75044Gene Accssion:NP_056141
Uniprot	O75044
GeneID	23380;
Concentration	1.3mg/ml
Formulation	Rabbit IgG in pH7.4 PBS, 0.05% NaN ₃ , 40% Glycerol.
Storage	Store at -20°C

Application Details

Immunohistochemistry:1:25-1:100

Images



Immunohistochemical analysis of paraffin-embedded Human liver cancer tissue using #40373 at dilution 1/20.

Background

This locus encodes a member of the SLIT-ROBO Rho GTPase activating protein family. The encoded protein stimulates GTPase activity of Rac1, and plays a role in cortical neuron development. This locus has several paralogs on human chromosome 1 resulting from segmental duplication. While this

locus itself is conserved among various species, the paralogs are found only in the genus Homo, and not in the genomes of non-human great apes.?

Note: This product is for in vitro research use only