

## WASP (Phospho-Tyr291) Antibody

Catalog No: #13153

Package Size: #13153-1 50ul #13153-2 100ul

Orders: order@signalwayantibody.com

Support: tech@signalwayantibody.com

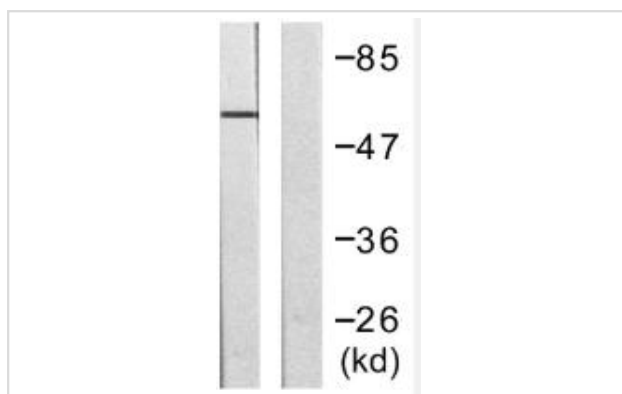
## Description

Product Name	WASP (Phospho-Tyr291) Antibody
Host Species	Rabbit
Clonality	Polyclonal
Purification	The antibody was affinity-purified from rabbit antiserum by affinity-chromatography using epitope-specific immunogen.
Applications	WB;IHC;IF
Species Reactivity	Hu, Ms
Specificity	Phospho-WASP (Y291) Polyclonal Antibody detects endogenous levels of WASP protein only when phosphorylated at Y291.
Immunogen Description	The antiserum was produced against synthesized peptide derived from human WASP around the phosphorylation site of Tyr291.
Target Name	WASP
Other Names	Eczema thrombocytopenia; IMD2; SCNX; THC; THC1; Thrombocytopenia 1 (X linked); U42471; Was; WASp; WASP_HUMAN; Wiskott Aldrich syndrome (eczema thrombocytopenia); Wiskott Aldrich syndrome; Wiskott Aldrich syndrome protein; Wiskott-Aldrich syndrome protein;
Accession No.	Swiss-Prot#:P42768NCBI Gene ID:7454
Uniprot	P42768
GeneID	7454;
Calculated MW	60kD
Concentration	1mg/ml
Formulation	Liquid in PBS containing 50% glycerol, 0.5% BSA and 0.02% sodium azide.
Storage	Store at -20 °C.Stable for 12 months from date of receipt

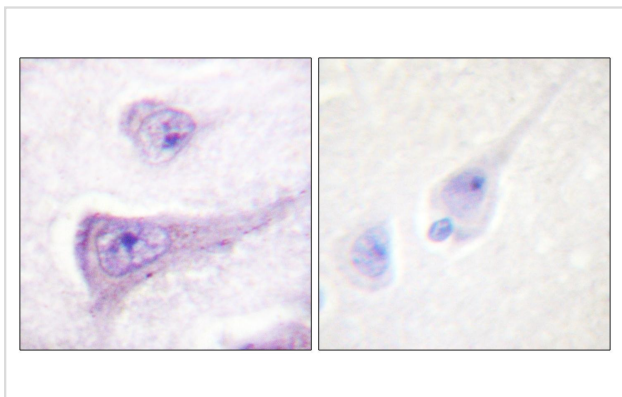
## Application Details

WB 1:500 - 1:2000. IHC 1:100 - 1:300. IF 1:50-200

## Images



Western blot analysis of lysates from HepG2 cells. The lane on the right is blocked with the phospho peptide.



Immunohistochemistry analysis of paraffin-embedded human brain. The picture on the right is blocked with the phospho peptide.

---

Note: This product is for in vitro research use only