

STARD5 Antibody

Catalog No: #40375

Orders: order@signalwayantibody.com

Support: tech@signalwayantibody.com

Description

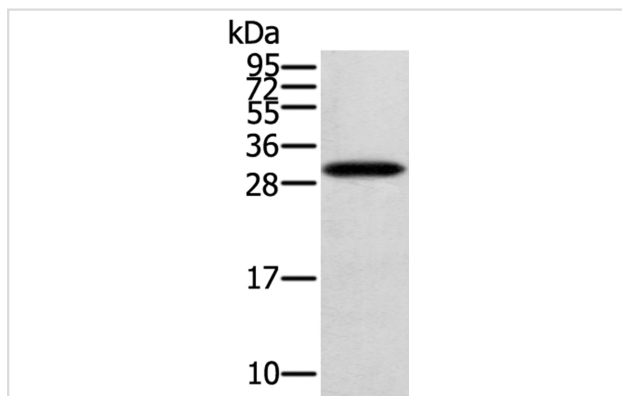
Product Name	STARD5 Antibody
Host Species	Rabbit
Clonality	Polyclonal
Purification	Antigen affinity purification.
Applications	WB IHC
Species Reactivity	Hu
Specificity	The antibody detects endogenous levels of total STARD5 protein.
Immunogen Type	Peptide
Immunogen Description	Synthetic peptide corresponding to residues near the N terminal of human StAR-related lipid transfer (START) domain containing 5
Target Name	STARD5
Accession No.	Swiss-Prot:Q9NSY2Gene Accssion:NP_871629
Uniprot	Q9NSY2
GeneID	80765;
SDS-PAGE MW	24KD
Concentration	2.4mg/ml
Formulation	Rabbit IgG in pH7.4 PBS, 0.05% NaN ₃ , 40% Glycerol.
Storage	Store at -20°C

Application Details

Western blotting: 1:500-1:2000

Immunohistochemistry:1:40-1:150

Images

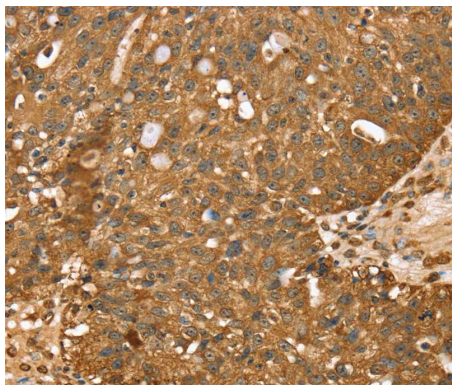


Gel: 12%SDS-PAGE

Lysate: 40ug Human fetal brain tissuePrimary antibody: 1/400 dilution

Secondary antibody dilution: 1/8000

Exposure time: 2 minutes



Immunohistochemical analysis of paraffin-embedded Human breast cancer tissue using #40375 at dilution 1/40.

Background

Cholesterol homeostasis is regulated, at least in part, by sterol regulatory element (SRE)-binding proteins (e.g., SREBP1; MIM 184756) and by liver X receptors (e.g., LXRA; MIM 602423). Upon sterol depletion, LXRs are inactive and SREBPs are cleaved, after which they bind promoter SREs and activate genes involved in cholesterol biosynthesis and uptake.

Note: This product is for in vitro research use only