

STK35 Antibody

Catalog No: #40376

Orders: order@signalwayantibody.comSupport: tech@signalwayantibody.com

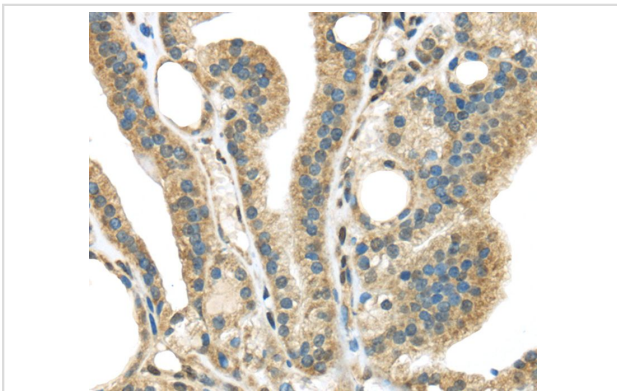
Description

Product Name	STK35 Antibody
Host Species	Rabbit
Clonality	Polyclonal
Purification	Antigen affinity purification.
Applications	IHC
Species Reactivity	Hu
Specificity	The antibody detects endogenous levels of total STK35 protein.
Immunogen Type	Peptide
Immunogen Description	Synthetic peptide corresponding to residues near the C terminal of human serine/threonine kinase 35
Target Name	STK35
Other Names	CLIK1; STK35L1
Accession No.	Swiss-Prot:Q8TDR2Gene Accssion:NP_543026
Uniprot	Q8TDR2
GeneID	140901;
Concentration	2.9mg/ml
Formulation	Rabbit IgG in pH7.4 PBS, 0.05% NaN ₃ , 40% Glycerol.
Storage	Store at -20°C

Application Details

Immunohistochemistry:1:30-1:150

Images



Immunohistochemical analysis of paraffin-embedded Human thyroid cancer tissue using #40376 at dilution 1/45.

Background

The protein encoded by this gene is a kinase that is predominantly found in the nucleus. However, it can interact with PDLIM1/CLP-36 in the cytoplasm and localize to actin stress fibers. The encoded protein may be a regulator of actin stress fibers in nonmuscle cells.

Note: This product is for in vitro research use only