

STX2 Antibody

Catalog No: #40378

Orders: order@signalwayantibody.comSupport: tech@signalwayantibody.com

Description

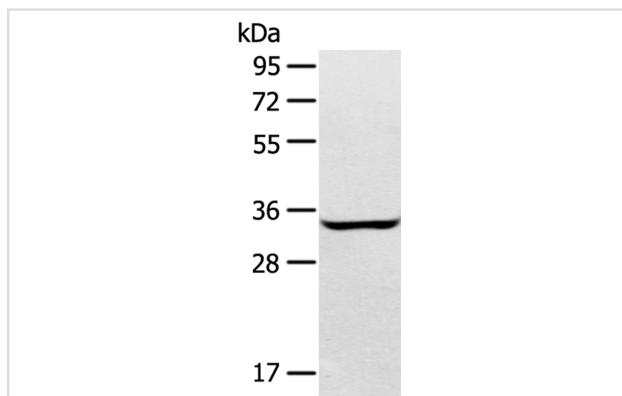
Product Name	STX2 Antibody
Host Species	Rabbit
Clonality	Polyclonal
Purification	Antigen affinity purification.
Applications	WB IHC
Species Reactivity	Hu
Specificity	The antibody detects endogenous levels of total STX2 protein.
Immunogen Type	Peptide
Immunogen Description	Synthetic peptide corresponding to residues near the N terminal of human syntaxin 2
Target Name	STX2
Other Names	EPM; EPIM; STX2A; STX2B; STX2C
Accession No.	Swiss-Prot:P32856Gene Accssion:NP_001971
Uniprot	P32856
GeneID	2054;
SDS-PAGE MW	33KD
Concentration	2.5mg/ml
Formulation	Rabbit IgG in pH7.4 PBS, 0.05% NaN ₃ , 40% Glycerol.
Storage	Store at -20°C

Application Details

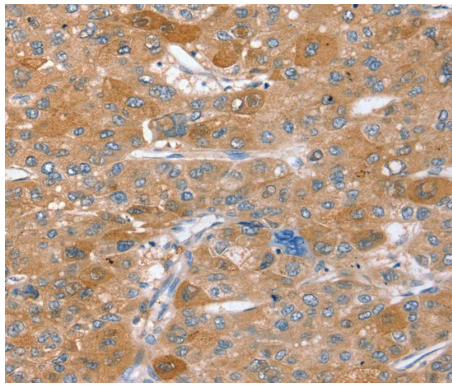
Western blotting: 1:500-1:2000

Immunohistochemistry:1:25-1:100

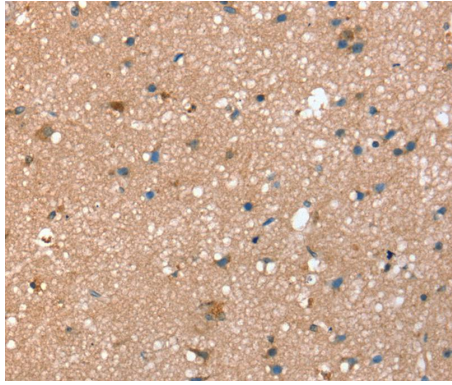
Images



Gel: 8%SDS-PAGE
Lysate: 40ug A172 cellPrimary antibody: 1/400 dilution
Secondary antibody dilution: 1/8000
Exposure time: 2 minutes



Immunohistochemical analysis of paraffin-embedded Human liver cancer tissue using #40378 at dilution 1/40.



Immunohistochemical analysis of paraffin-embedded Human brain tissue using #40378 at dilution 1/40.

Background

The product of this gene belongs to the syntaxin/epimorphin family of proteins. The syntaxins are a large protein family implicated in the targeting and fusion of intracellular transport vesicles. The product of this gene regulates epithelial-mesenchymal interactions and epithelial cell morphogenesis and activation. Alternatively spliced transcript variants encoding different isoforms have been identified.?

Note: This product is for in vitro research use only