

TRIM22 Antibody

Catalog No: #40381

Orders: order@signalwayantibody.comSupport: tech@signalwayantibody.com

Description

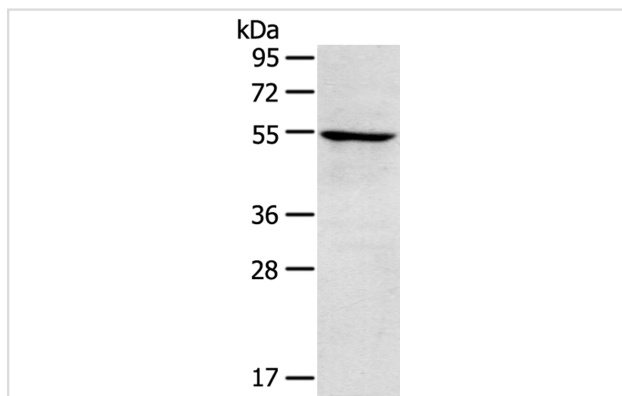
Product Name	TRIM22 Antibody
Host Species	Rabbit
Clonality	Polyclonal
Purification	Antigen affinity purification.
Applications	WB IHC
Species Reactivity	Hu
Specificity	The antibody detects endogenous levels of total TRIM22 protein.
Immunogen Type	Peptide
Immunogen Description	Synthetic peptide corresponding to residues near the N terminal of human tripartite motif containing 22
Target Name	TRIM22
Other Names	RNF94; STAF50; GPSTAF50
Accession No.	Swiss-Prot:Q8IYM9Gene Accssion:NP_006065
Uniprot	Q8IYM9
GeneID	10346;
SDS-PAGE MW	57KD
Concentration	1.0mg/ml
Formulation	Rabbit IgG in pH7.4 PBS, 0.05% NaN ₃ , 40% Glycerol.
Storage	Store at -20°C

Application Details

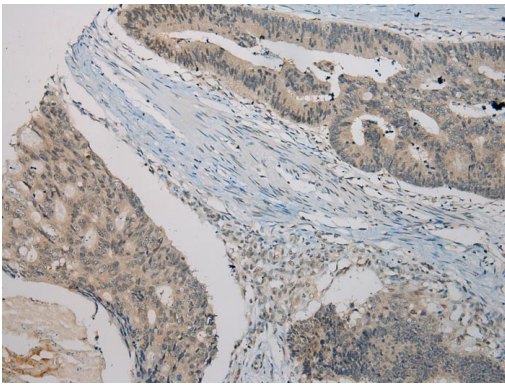
Western blotting: 1:200-1:1000

Immunohistochemistry: 1:100-1:200

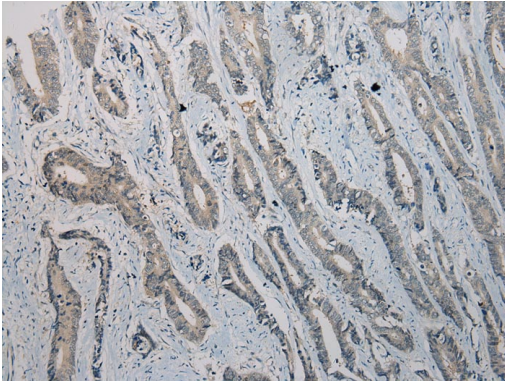
Images



Gel: 8%SDS-PAGE
Lysate: 40ug A172 cellPrimary antibody: 1/250 dilution
Secondary antibody dilution: 1/8000
Exposure time: 3 minutes



Immunohistochemical analysis of paraffin-embedded Human Colorectal cancer tissue using #40381 at dilution 1/100.



Immunohistochemical analysis of paraffin-embedded Human Gastric cancer tissue using #40381 at dilution 1/100.

Background

The protein encoded by this gene is a member of the tripartite motif (TRIM) family. The TRIM motif includes three zinc-binding domains, a RING, a B-box type 1 and a B-box type 2, and a coiled-coil region. This protein localizes to the cytoplasm and its expression is induced by interferon. The protein down-regulates transcription from the HIV-1 LTR promoter region, suggesting that function of this protein may be to mediate interferon's antiviral effects.

Note: This product is for in vitro research use only