

STING (Phospho-Ser366) Antibody

Catalog No: #13260



Orders: order@signalwayantibody.com
Support: tech@signalwayantibody.com

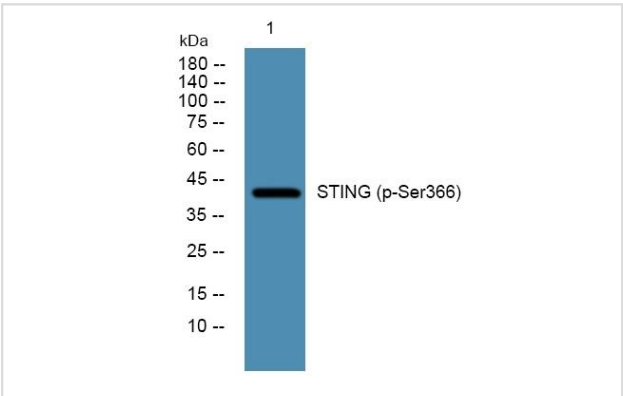
Description

Product Name	STING (Phospho-Ser366) Antibody
Host Species	Rabbit
Clonality	Polyclonal
Purification	The antibody was affinity-purified from rabbit serum by affinity-chromatography using specific immunogen.
Applications	WB
Species Reactivity	Human; Mouse; Rat
Specificity	This antibody detects endogenous levels of Human/Rat STING (phospho-Ser366) or mouse STING (phospho-Ser365)
Immunogen Description	Synthesized phosho peptide around human STING (Ser366)
Target Name	STING
Other Names	endoplasmic reticulum IFN stimulator; Endoplasmic reticulum interferon stimulator; ERIS; FLJ38577; hMITA; hSTING; Mediator of IRF3 activation; MITA; Mitochondrial mediator of IRF3 activation; MPYS; N terminal methionine proline tyrosine serine plasma membrane tetraspanner; NET23; Stimulator of interferon genes; Stimulator of interferon genes protein; STING; TM173_HUMAN; Tmem173; Transmembrane protein 173;
Accession No.	Swiss-Prot#:Q86WV6NCBI Gene ID:340061
Uniprot	Q86WV6
GeneID	340061;
Calculated MW	38kDa
Concentration	1mg/ml
Formulation	Liquid in PBS containing 50% glycerol, 0.5% BSA and 0.02% sodium azide.
Storage	Store at -20 °C.Stable for 12 months from date of receipt

Application Details

WB 1:1000-1:2000

Images



Western blot analysis of lysates from HCT116 cells, primary antibody was diluted at 1:1000, 4° over night

Note: This product is for in vitro research use only