

## MLKL (Phospho-Ser125) Antibody

Catalog No: #13263

Package Size: #13263-1 50ul #13263-2 100ul

Orders: order@signalwayantibody.com

Support: tech@signalwayantibody.com

## Description

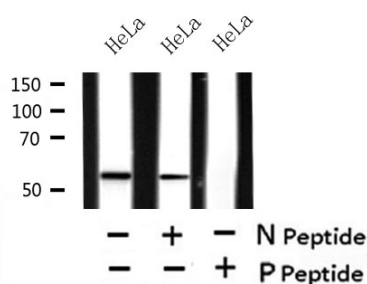
Product Name	MLKL (Phospho-Ser125) Antibody
Host Species	Rabbit
Clonality	Polyclonal
Purification	The antibody is from purified rabbit serum by affinity purification via sequential chromatography on phospho- and non-phospho-peptide affinity columns.
Applications	WB IHC
Species Reactivity	Human,Mouse,Rat
Specificity	Phospho-MLKL (Phospho-Ser125) Antibody detects endogenous levels of MLKL only when phosphorylated at Ser125
Immunogen Description	A synthesized peptide derived from human MLKL around the phosphorylation site of Ser125
Target Name	MLKL
Other Names	9130019I15Rik; FLJ34389; hMLKL; Mixed lineage kinase domain like; Mixed lineage kinase domain like protein; Mixed lineage kinase domain like pseudokinase; Mixed lineage kinase domain-like protein; Mlkl; MLKL_HUMAN;
Accession No.	Swiss-Prot#:Q8NB16NCBI Gene ID:197259
Uniprot	Q8NB16
GeneID	197259;
Calculated MW	54
Concentration	1mg/ml
Formulation	Rabbit IgG in phosphate buffered saline , pH 7.4, 150mM NaCl, 0.02% sodium azide and 50% glycerol.
Storage	Store at -20 °C.Stable for 12 months from date of receipt

## Application Details

WB: 1:500-1:2000

IHC 1:50-1:200

## Images



Western blot analysis of Phospho-MLKL (Ser125) in lysates of HeLa , using Phospho-MLKL (Ser125) Antibody(13263).

---

Note: This product is for in vitro research use only