

## CRTC2 Antibody

Catalog No: #40388

Orders: order@signalwayantibody.com

Support: tech@signalwayantibody.com

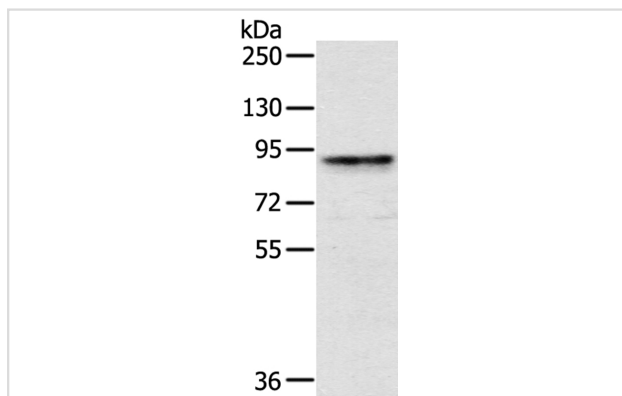
## Description

|                       |   |
|-----------------------|---|
| Product Name          | CRTC2 Antibody  |
| Host Species          | Rabbit  |
| Clonality             | Polyclonal  |
| Purification          | Antigen affinity purification.  |
| Applications          | WB  |
| Species Reactivity    | Hu  |
| Specificity           | The antibody detects endogenous levels of total CRTC2 protein.  |
| Immunogen Type        | Peptide   |
| Immunogen Description | Synthetic peptide corresponding to residues near the C terminal of human CREB regulated transcription coactivator 2 |
| Target Name           | CRTC2   |
| Other Names           | TORC2; TORC-2   |
| Accession No.         | Swiss-Prot:Q53ET0Gene Accssion:NP_859066  |
| Uniprot               | Q53ET0  |
| GeneID                | 200186;   |
| SDS-PAGE MW           | 73KD  |
| Concentration         | 0.6mg/ml  |
| Formulation           | Rabbit IgG in pH7.4 PBS, 0.05% NaN <sub>3</sub> , 40% Glycerol.   |
| Storage               | Store at -20°C  |

## Application Details

Western blotting: 1:200-1:1000

## Images



Gel: 6%SDS-PAGE  
 Lysate: 40ug Raji cell  
 Primary antibody: 1/250 dilution  
 Secondary antibody dilution: 1/8000  
 Exposure time: 1 minute

## Background

This gene encodes a member of the transducers of regulated cAMP response element-binding protein activity family of transcription coactivators.

These proteins promote the transcription of genes targeted by the cAMP response element-binding protein, and therefore play an important role in many cellular processes. Under basal conditions the encoded protein is phosphorylated by AMP-activated protein kinase or the salt-inducible kinases and is sequestered in the cytoplasm.?

---

Note: This product is for in vitro research use only