

## TREM2 Antibody

Catalog No: #40390

Orders: [order@signalwayantibody.com](mailto:order@signalwayantibody.com)Support: [tech@signalwayantibody.com](mailto:tech@signalwayantibody.com)

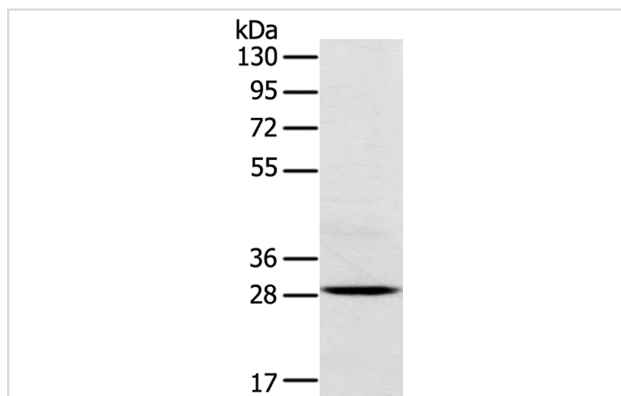
## Description

Product Name	TREM2 Antibody
Host Species	Rabbit
Clonality	Polyclonal
Purification	Antigen affinity purification.
Applications	WB
Species Reactivity	Hu Ms
Specificity	The antibody detects endogenous levels of total TREM2 protein.
Immunogen Type	Peptide
Immunogen Description	Synthetic peptide corresponding to residues near the N terminal of human triggering receptor expressed on myeloid cells 2
Target Name	TREM2
Other Names	TREM-2; Trem2a; Trem2b; Trem2c
Accession No.	Swiss-Prot:Q9NZC2Gene Accssion:NP_061838
Uniprot	Q9NZC2
GeneID	54209;
SDS-PAGE MW	25KD
Concentration	1.5mg/ml
Formulation	Rabbit IgG in pH7.4 PBS, 0.05% NaN <sub>3</sub> , 40% Glycerol.
Storage	Store at -20°C

## Application Details

Western blotting: 1:200-1:1000

## Images



Gel: 8%SDS-PAGE  
 Lysate: 40ug Mouse brain tissue  
 Primary antibody: 1/250 dilution  
 Secondary antibody dilution: 1/8000  
 Exposure time: 20 seconds

## Background

This gene encodes a membrane protein that forms a receptor signaling complex with the TYRO protein tyrosine kinase binding protein. The encoded

protein functions in immune response and may be involved in chronic inflammation by triggering the production of constitutive inflammatory cytokines. Defects in this gene are a cause of polycystic lipomembranous osteodysplasia with sclerosing leukoencephalopathy (PLOSL).?

---

Note: This product is for in vitro research use only