

CSPG4 Antibody

Catalog No: #40391

Orders: order@signalwayantibody.comSupport: tech@signalwayantibody.com

Description

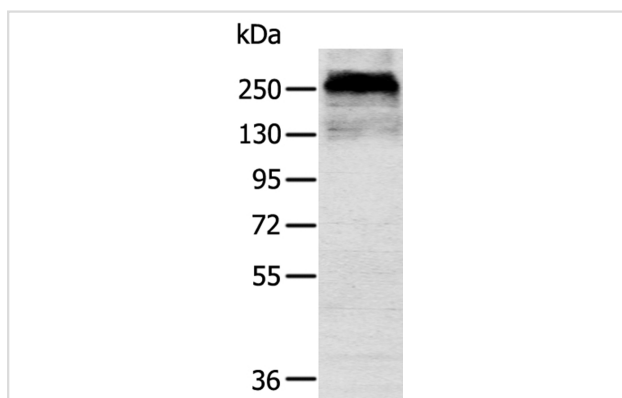
Product Name	CSPG4 Antibody
Host Species	Rabbit
Clonality	Polyclonal
Purification	Antigen affinity purification.
Applications	WB IHC
Species Reactivity	Hu Ms Rt
Specificity	The antibody detects endogenous levels of total CSPG4 protein.
Immunogen Type	Peptide
Immunogen Description	Synthetic peptide corresponding to residues near the C terminal of human chondroitin sulfate proteoglycan 4
Target Name	CSPG4
Other Names	NG2; MCSP; MCSPG; MSK16; HMW-MAA; MEL-CSPG
Accession No.	Swiss-Prot:Q6UVK1 Gene Accssion:NP_001888
Uniprot	Q6UVK1
GeneID	1464;
SDS-PAGE MW	251KD
Concentration	1.6mg/ml
Formulation	Rabbit IgG in pH7.4 PBS, 0.05% NaN ₃ , 40% Glycerol.
Storage	Store at -20°C

Application Details

Western blotting: 1:500-1:2000

Immunohistochemistry:1:20-1:100

Images

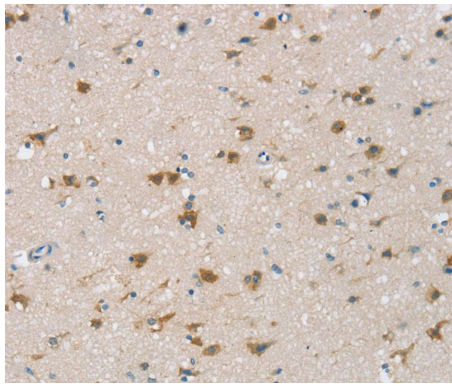


Gel: 6%SDS-PAGE

Lysate: 40ug Mouse skin tissue Primary antibody: 1/200 dilution

Secondary antibody dilution: 1/8000

Exposure time: 1 minute



Immunohistochemical analysis of paraffin-embedded Human brain tissue using #40391 at dilution 1/25.

Background

A human melanoma-associated chondroitin sulfate proteoglycan plays a role in stabilizing cell-substratum interactions during early events of melanoma cell spreading on endothelial basement membranes. CSPG4 represents an integral membrane chondroitin sulfate proteoglycan expressed by human malignant melanoma cells.?

Note: This product is for in vitro research use only