

PRSS50 Antibody

Catalog No: #40393

Orders: order@signalwayantibody.comSupport: tech@signalwayantibody.com

Description

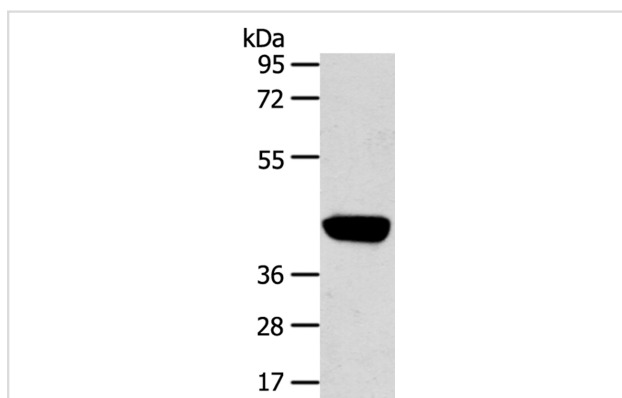
Product Name	PRSS50 Antibody
Host Species	Rabbit
Clonality	Polyclonal
Purification	Antigen affinity purification.
Applications	WB IHC
Species Reactivity	Hu
Specificity	The antibody detects endogenous levels of total PRSS50 protein.
Immunogen Type	Peptide
Immunogen Description	Synthetic peptide corresponding to a region derived from internal residues of human protease, serine, 50
Target Name	PRSS50
Other Names	CT20; TSP50
Accession No.	Swiss-Prot:Q9UI38Gene Accssion:NP_037402
Uniprot	Q9UI38
GeneID	29122;
SDS-PAGE MW	43KD
Concentration	1.1mg/ml
Formulation	Rabbit IgG in pH7.4 PBS, 0.05% NaN ₃ , 40% Glycerol.
Storage	Store at -20°C

Application Details

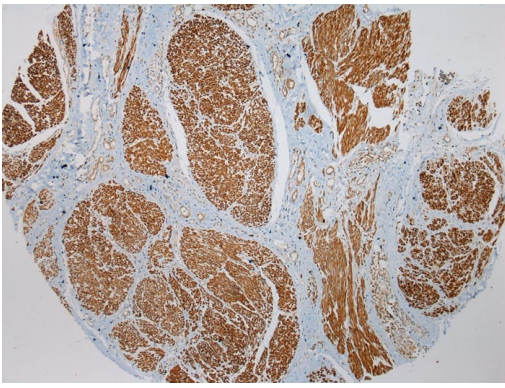
Western blotting: 1:500-1:2000

Immunohistochemistry: 1:100-1:200

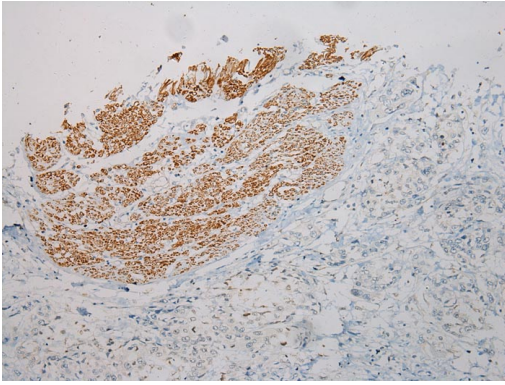
Images



Gel: 8%SDS-PAGE
Lysate: 40ug Hepg2 cellPrimary antibody: 1/450 dilution
Secondary antibody dilution: 1/8000
Exposure time: 3 minutes



Immunohistochemical analysis of paraffin-embedded Human Prostate cancer tissue using #40393 at dilution 1/100.



Immunohistochemical analysis of paraffin-embedded Human Prostate cancer tissue using #40393 at dilution 1/200.

Background

May be involved in proteolysis through its threonine endopeptidase activity. Testis specific. Differentially expressed in some breast cancer tissues.

Note: This product is for in vitro research use only