

# TEX37 Antibody

Catalog No: #40395

Orders: [order@signalwayantibody.com](mailto:order@signalwayantibody.com)Support: [tech@signalwayantibody.com](mailto:tech@signalwayantibody.com)

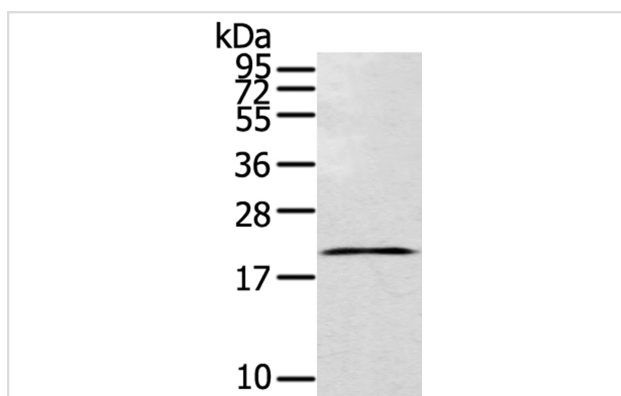
## Description

Product Name	TEX37 Antibody
Host Species	Rabbit
Clonality	Polyclonal
Purification	Antigen affinity purification.
Applications	WB
Species Reactivity	Hu
Specificity	The antibody detects endogenous levels of total TEX37 protein.
Immunogen Type	Peptide
Immunogen Description	Synthetic peptide of human testis expressed 37
Target Name	TEX37
Other Names	TSC21; C2orf51
Accession No.	Swiss-Prot:Q96LM6Gene Accssion:NP_689883
Uniprot	Q96LM6
GeneID	200523;
SDS-PAGE MW	21KD
Concentration	2.2mg/ml
Formulation	Rabbit IgG in pH7.4 PBS, 0.05% NaN <sub>3</sub> , 40% Glycerol.
Storage	Store at -20°C

## Application Details

Western blotting: 1:200-1:1000

## Images



Gel: 12%SDS-PAGE  
 Lysate: 40ug A549 cellPrimary antibody: 1/200 dilution  
 Secondary antibody dilution: 1/8000  
 Exposure time: 20 seconds

## Background

The second largest human chromosome, 2 consists of 237 million bases encoding over 1,400 genes and making up approximately 8% of the human genome. A number of genetic diseases are linked to genes on chromosome 2. Interestingly, chromosome 2 contains what appears to be a vestigial

second centromere and vestigial telomeres which gives credence to the hypothesis that human chromosome 2 is the result of an ancient fusion of two ancestral chromosomes seen in modern form today in apes.

---

Note: This product is for in vitro research use only