

## DDK1 Antibody

Catalog No: #40397

Orders: [order@signalwayantibody.com](mailto:order@signalwayantibody.com)Support: [tech@signalwayantibody.com](mailto:tech@signalwayantibody.com)

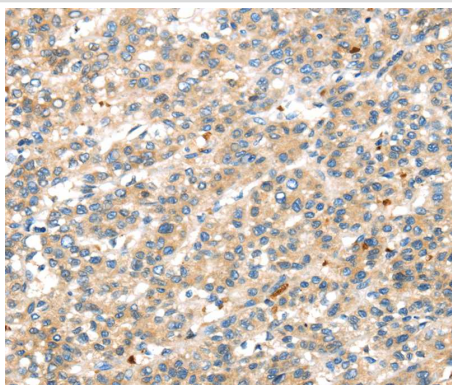
## Description

Product Name	DDK1 Antibody
Host Species	Rabbit
Clonality	Polyclonal
Purification	Antigen affinity purification.
Applications	IHC
Species Reactivity	Hu Ms
Specificity	The antibody detects endogenous levels of total DDK1 protein.
Immunogen Type	Peptide
Immunogen Description	Synthetic peptide corresponding to residues near the C terminal of human dickkopf WNT signaling pathway inhibitor 1
Target Name	DDK1
Other Names	SK; DKK-1
Accession No.	Swiss-Prot:O94907 Gene Accssion:NP_036374
Uniprot	O94907
GeneID	22943;
Concentration	2.2mg/ml
Formulation	Rabbit IgG in pH7.4 PBS, 0.05% NaN <sub>3</sub> , 40% Glycerol.
Storage	Store at -20°C

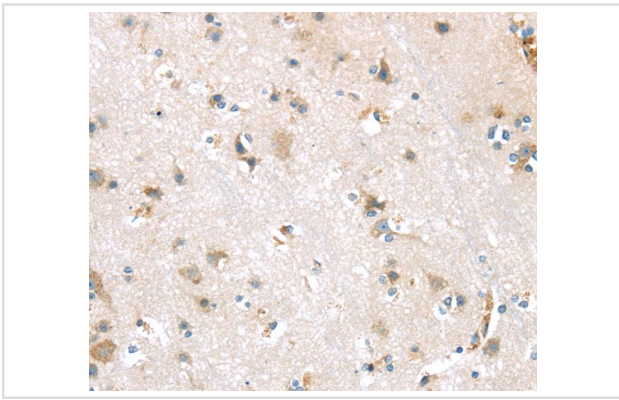
## Application Details

Immunohistochemistry:1:25-1:100

## Images



Immunohistochemical analysis of paraffin-embedded Human liver cancer tissue using #40397 at dilution 1/35.



Immunohistochemical analysis of paraffin-embedded Human brain tissue using #40397 at dilution 1/35.

## Background

This gene encodes a protein that is a member of the dickkopf family. It is a secreted protein with two cysteine rich regions and is involved in embryonic development through its inhibition of the WNT signaling pathway. Elevated levels of DKK1 in bone marrow plasma and peripheral blood is associated with the presence of osteolytic bone lesions in patients with multiple myeloma.?

Note: This product is for in vitro research use only