

## CHRDL1 Antibody

Catalog No: #40398

Orders: [order@signalwayantibody.com](mailto:order@signalwayantibody.com)Support: [tech@signalwayantibody.com](mailto:tech@signalwayantibody.com)

## Description

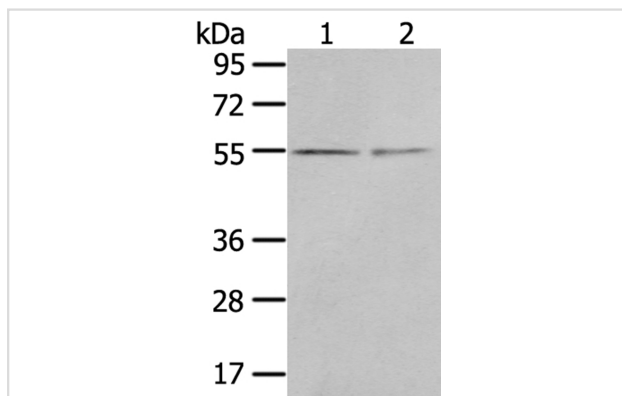
Product Name	CHRDL1 Antibody
Host Species	Rabbit
Clonality	Polyclonal
Purification	Antigen affinity purification.
Applications	WB IHC
Species Reactivity	Hu
Specificity	The antibody detects endogenous levels of total CHRDL1 protein.
Immunogen Type	Peptide
Immunogen Description	Synthetic peptide of human chordin-like 1
Target Name	CHRDL1
Other Names	CHL; MGC1; MGCN; VOPT; NRLN1; dA141H5.1
Accession No.	Swiss-Prot:Q9BU40Gene Accssion:NP_660277
Uniprot	Q9BU40
GeneID	91851;
SDS-PAGE MW	51KD
Concentration	2.3mg/ml
Formulation	Rabbit IgG in pH7.4 PBS, 0.05% NaN <sub>3</sub> , 40% Glycerol.
Storage	Store at -20°C

## Application Details

Western blotting: 1:200-1:1000

Immunohistochemistry:1:25-1:100

## Images



Gel: 8%SDS-PAGE

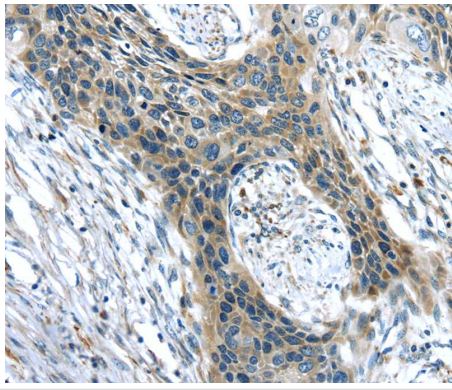
Lysates (from left to right): 293T cell and human normal kidney tissue

Amount of lysate: 40ug per lane

Primary antibody: 1/400 dilution

Secondary antibody dilution: 1/8000

Exposure time: 3 minutes



Immunohistochemical analysis of paraffin-embedded Human esophagus cancer tissue using #40398 at dilution 1/35.

## Background

This gene encodes an antagonist of bone morphogenetic protein 4. The encoded protein may play a role in topographic retinotectal projection and in the regulation of retinal angiogenesis in response to hypoxia. Alternatively spliced transcript variants encoding different isoforms have been described.

Note: This product is for in vitro research use only