

## ULBP1 Antibody

Catalog No: #40399

Orders: [order@signalwayantibody.com](mailto:order@signalwayantibody.com)Support: [tech@signalwayantibody.com](mailto:tech@signalwayantibody.com)

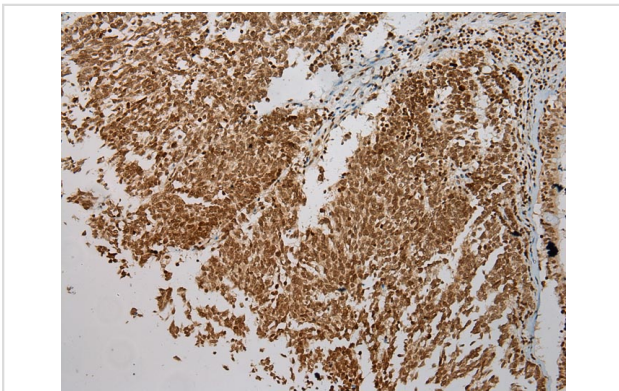
## Description

Product Name	ULBP1 Antibody
Host Species	Rabbit
Clonality	Polyclonal
Purification	Antigen affinity purification.
Applications	IHC
Species Reactivity	Hu
Specificity	The antibody detects endogenous levels of total ULBP1 protein.
Immunogen Type	Peptide
Immunogen Description	Synthetic peptide of human UL16 binding protein 1
Target Name	ULBP1
Other Names	RAET11
Accession No.	Swiss-Prot:Q9BZM6 Gene Accssion:NP_079494
Uniprot	Q9BZM6
GeneID	80329;
Concentration	0.9mg/ml
Formulation	Rabbit IgG in pH7.4 PBS, 0.05% NaN <sub>3</sub> , 40% Glycerol.
Storage	Store at -20°C

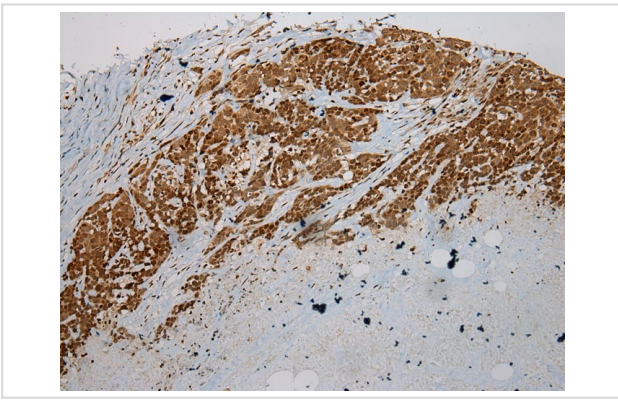
## Application Details

Immunohistochemistry: 1:100-1:200

## Images



Immunohistochemical analysis of paraffin-embedded Human Lung cancer tissue using #40399 at dilution 1/200.



Immunohistochemical analysis of paraffin-embedded Human Thyroid cancer tissue using #40399 at dilution 1/200.

## Background

Ligand for the KLRK1/NKG2D receptor, together with at least ULBP2 and ULBP3. ULBPs activate multiple signaling pathways in primary NK cells, resulting in the production of cytokines and chemokines. Binding of ULBPs ligands to KLRK1/NKG2D induces calcium mobilization and activation of the JAK2, STAT5, ERK and PI3K kinase/Akt signal transduction pathway. In CMV infected cells, interacts with soluble CMV glycoprotein UL16. The interaction with UL16 blocked the interaction with the KLRK1/NKG2D receptor, providing a mechanism by which CMV infected cells might escape the immune system. UL16 also causes ULBP1 to be retained in the ER and cis-Golgi apparatus so that it does not reach the cell surface.

Note: This product is for in vitro research use only