

Histone H3 (Phospho-Thr6) Polyclonal Antibody

Catalog No: #12176

Package Size: #12176-1 50ul #12176-2 100ul

Orders: order@signalwayantibody.com

Support: tech@signalwayantibody.com

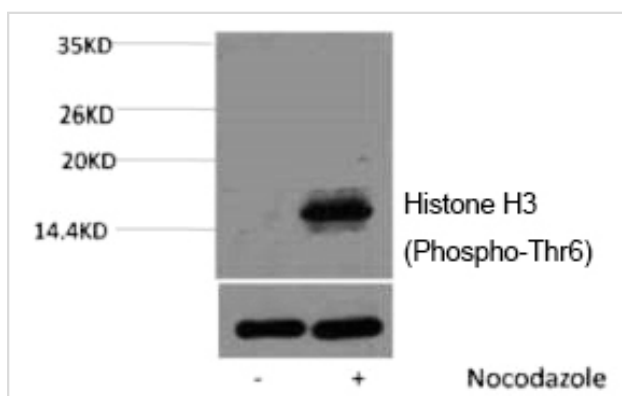
Description

Product Name	Histone H3 (Phospho-Thr6) Polyclonal Antibody
Host Species	Rabbit
Clonality	Polyclonal
Purification	The antibody was affinity-purified from antiserum by affinity-chromatography
Applications	WB
Species Reactivity	Hu Ms Rt
Specificity	The antibody detects endogenous Histone H3 (Phospho Thr6) protein.
Immunogen Type	peptide
Immunogen Description	Phospho peptide at Thr6 of Histone H3
Target Name	Histone H3
Modification	Phospho
Other Names	HIST1H3A; H3FA; HIST1H3B; H3FL; HIST1H3C; H3FC; HIST1H3D; H3FB; HIST1H3E; H3FD; HIST1H3F; H3FI; HIST1H3G; H3FH; HIST1H3H; H3FK; HIST1H3I; H3FF; HIST1H3J; H3FJ; Histone H3.1; Histone H3/a; Histone H3/b; Histone H3/c; Histone H3/d; Histone H3/f; Histone H3/
Accession No.	Swiss-Prot: P68431/Q71DI3/P84243NCBI Gene ID: 8350/8351/8352/8353/8354/8355/8356/8357/8358/8968
Uniprot	P68431
GeneID	8350;8351;8352;8353;8354;8355;8356;8357;8358;8968;
SDS-PAGE MW	15-17kd
Concentration	1mg/ml
Formulation	Liquid in PBS containing 50% glycerol, 0.5% BSA and 0.02% sodium azide.
Storage	Store at -20°C/1 year

Application Details

Western blotting: 1:1000

Images



Western blot analysis of extracts from HeLa cells, untreated (-) or treated, 1:2000.

Note: This product is for in vitro research use only