

AMPK $\alpha$ 1 (Phospho-Ser496) Polyclonal Antibody

Catalog No: #12179

Package Size: #12179-1 50ul #12179-2 100ul

Orders: [order@signalwayantibody.com](mailto:order@signalwayantibody.com)Support: [tech@signalwayantibody.com](mailto:tech@signalwayantibody.com)

## Description

Product Name	AMPK $\alpha$ 1 (Phospho-Ser496) Polyclonal Antibody
Host Species	Rabbit
Clonality	Polyclonal
Purification	The antibody was affinity-purified from rabbit antiserum by affinity-chromatography using epitope-specific immunogen.
Applications	WB IHC ELISA
Species Reactivity	Hu Ms Rt
Specificity	Phospho-AMPK $\alpha$ 1 (S496) Polyclonal Antibody detects endogenous levels of AMPK $\alpha$ 1 protein only when phosphorylated at S496.
Immunogen Type	peptide
Immunogen Description	Synthesized peptide derived from human AMPK $\alpha$ 1 around the phosphorylation site of S496.
Target Name	AMPK $\alpha$ 1
Modification	Phospho
Other Names	PRKAA1; AMPK1; 5'-AMP-activated protein kinase catalytic subunit alpha-1; AMPK subunit alpha-1; Acetyl-CoA carboxylase kinase; ACACA kinase; Hydroxymethylglutaryl-CoA reductase kinase; HMGCR kinase; Tau-protein kinase PRKAA1
Accession No.	Swiss-Prot: Q13131NCBI Gene ID: 5562
Uniprot	Q13131
GeneID	5562;
Target Species	human
SDS-PAGE MW	62kd
Concentration	1mg/ml
Formulation	Liquid in PBS containing 50% glycerol, 0.5% BSA and 0.02% sodium azide.
Storage	Store at -20°C/1 year

## Application Details

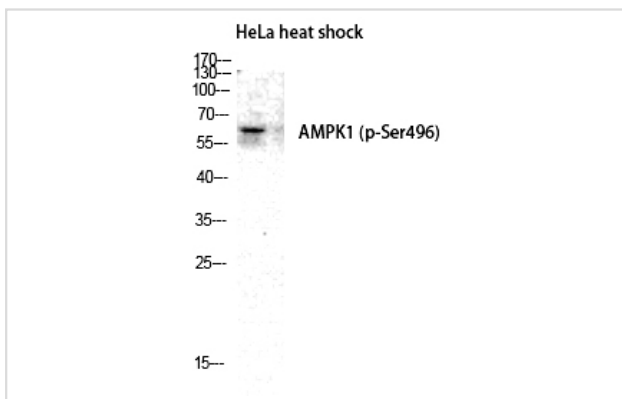
Western blotting: 1/500 - 1/2000

Immunohistochemistry: 1/100 - 1/300

ELISA: 1/20000

Not yet tested in other applications

## Images



Western Blot analysis of HELA cells using Phospho-AMPK $\alpha$ 1 (S496) Polyclonal Antibody

Note: This product is for in vitro research use only