

Bcl-x (Phospho-Thr47) Polyclonal Antibody

Catalog No: #12184

Package Size: #12184-1 50ul #12184-2 100ul

Orders: order@signalwayantibody.comSupport: tech@signalwayantibody.com

Description

Product Name	Bcl-x (Phospho-Thr47) Polyclonal Antibody
Host Species	Rabbit
Clonality	Polyclonal
Purification	The antibody was affinity-purified from rabbit antiserum by affinity-chromatography using epitope-specific immunogen.
Applications	WB IHC IF ELISA
Species Reactivity	Hu Ms Rt
Specificity	Phospho-Bcl-x (T47) Polyclonal Antibody detects endogenous levels of Bcl-x protein only when phosphorylated at T47.
Immunogen Type	peptide
Immunogen Description	Synthesized peptide derived from human Bcl-x around the phosphorylation site of T47.
Target Name	Bcl-x
Modification	Phospho
Other Names	BCL2L1; BCL2L; BCLX; Bcl-2-like protein 1; Bcl2-L-1; Apoptosis regulator Bcl-X
Accession No.	Swiss-Prot: Q07817NCBI Gene ID: 598
Uniprot	Q07817
GeneID	598;
Target Species	human
SDS-PAGE MW	30kd
Concentration	1mg/ml
Formulation	Liquid in PBS containing 50% glycerol, 0.5% BSA and 0.02% sodium azide.
Storage	Store at -20°C/1 year

Application Details

Western blotting: 1/500 - 1/2000

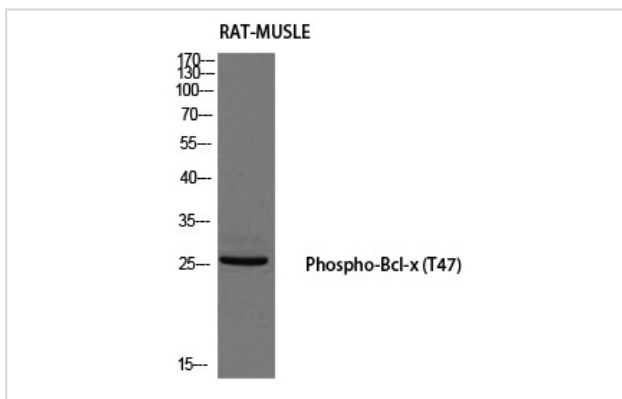
Immunohistochemistry: 1/100 - 1/300

Immunofluorescence: 1/200 - 1/1000

ELISA: 1/40000

Not yet tested in other applications

Images



Western blot analysis of RAT-MUSCLE using Phospho-Bcl-x (T47) antibody.

Note: This product is for in vitro research use only