

Cdc25A (Phospho-Ser75) Polyclonal Antibody

Catalog No: #12188

Package Size: #12188-1 50ul #12188-2 100ul

Orders: order@signalwayantibody.comSupport: tech@signalwayantibody.com

Description

Product Name	Cdc25A (Phospho-Ser75) Polyclonal Antibody
Host Species	Rabbit
Clonality	Polyclonal
Purification	The antibody was affinity-purified from rabbit antiserum by affinity-chromatography using epitope-specific immunogen.
Applications	WB IHC ELISA
Species Reactivity	Hu Ms Rt
Specificity	Phospho-Cdc25A (S75) Polyclonal Antibody detects endogenous levels of Cdc25A protein only when phosphorylated at S75.
Immunogen Type	peptide
Immunogen Description	Synthesized peptide derived from human Cdc25A around the phosphorylation site of S75.
Target Name	Cdc25A
Modification	Phospho
Other Names	CDC25A; M-phase inducer phosphatase 1; Dual specificity phosphatase Cdc25A
Accession No.	Swiss-Prot: P30304NCBI Gene ID: 993
Uniprot	P30304
GeneID	993;
Target Species	human
SDS-PAGE MW	59kd
Concentration	1mg/ml
Formulation	Liquid in PBS containing 50% glycerol, 0.5% BSA and 0.02% sodium azide.
Storage	Store at -20°C/1 year

Application Details

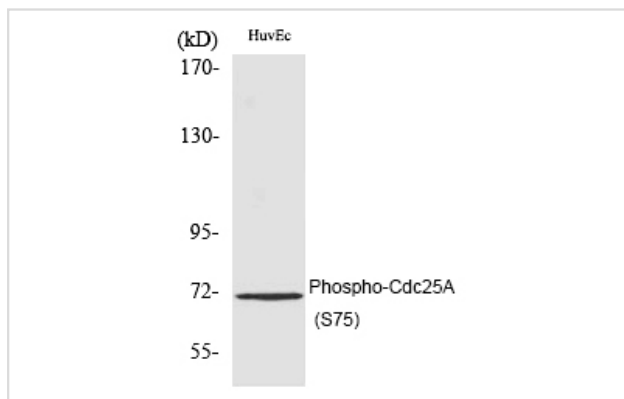
Western blotting: 1/500 - 1/2000

Immunohistochemistry: 1/100 - 1/300

ELISA: 1/5000

Not yet tested in other applications

Images



Western Blot analysis of HuvEc cells using Phospho-Cdc25A (S75) Polyclonal Antibody

Note: This product is for in vitro research use only