

Cortactin (Phospho-Tyr421) Polyclonal Antibody

Catalog No: #12192

Package Size: #12192-1 50ul #12192-2 100ul

Orders: order@signalwayantibody.comSupport: tech@signalwayantibody.com

Description

| | |
|-----------------------|---|
| Product Name | Cortactin (Phospho-Tyr421) Polyclonal Antibody |
| Host Species | Rabbit |
| Clonality | Polyclonal |
| Purification | The antibody was affinity-purified from rabbit antiserum by affinity-chromatography using epitope-specific immunogen. |
| Applications | WB IHC ELISA |
| Species Reactivity | Hu Ms Rt |
| Specificity | Phospho-Cortactin (Y421) Polyclonal Antibody detects endogenous levels of Cortactin protein only when phosphorylated at Y421. |
| Immunogen Type | peptide |
| Immunogen Description | Synthesized peptide derived from human Cortactin around the phosphorylation site of Y421. |
| Target Name | Cortactin |
| Modification | Phospho |
| Other Names | CTTN; EMS1; Src substrate cortactin; Amplexin; Oncogene EMS1 |
| Accession No. | Swiss-Prot: Q14247NCBI Gene ID: 2017 |
| Uniprot | Q14247 |
| GeneID | 2017; |
| Target Species | human |
| SDS-PAGE MW | 85kd |
| Concentration | 1mg/ml |
| Formulation | Liquid in PBS containing 50% glycerol, 0.5% BSA and 0.02% sodium azide. |
| Storage | Store at -20°C/1 year |

Application Details

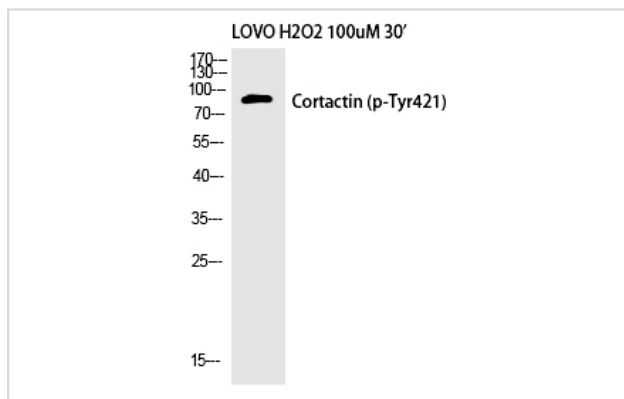
Western blotting: 1/500 - 1/2000

Immunohistochemistry: 1/100 - 1/300

ELISA: 1/20000

Not yet tested in other applications

Images



Western Blot analysis of LOVO+H2O2 cells using Phospho-Cortactin (Y421) Polyclonal Antibody

Note: This product is for in vitro research use only