

Ezrin (Phospho-Thr566) Polyclonal Antibody

Catalog No: #12195

Package Size: #12195-1 50ul #12195-2 100ul

Orders: order@signalwayantibody.comSupport: tech@signalwayantibody.com

Description

| | |
|-----------------------|---|
| Product Name | Ezrin (Phospho-Thr566) Polyclonal Antibody |
| Host Species | Rabbit |
| Clonality | Polyclonal |
| Purification | The antibody was affinity-purified from rabbit antiserum by affinity-chromatography using epitope-specific immunogen. |
| Applications | WB ELISA |
| Species Reactivity | Hu Ms Rt |
| Specificity | Phospho-Ezrin (T566) Polyclonal Antibody detects endogenous levels of Ezrin protein only when phosphorylated at T566. |
| Immunogen Type | peptide |
| Immunogen Description | Synthesized peptide derived from human Ezrin around the phosphorylation site of T566. |
| Target Name | Ezrin |
| Modification | Phospho |
| Other Names | EZR; VIL2; Ezrin; Cytovillin; Villin-2; p81 |
| Accession No. | Swiss-Prot: P15311NCBI Gene ID: 7430 |
| Uniprot | P15311 |
| GeneID | 7430; |
| Target Species | human |
| SDS-PAGE MW | 69kd |
| Concentration | 1mg/ml |
| Formulation | Liquid in PBS containing 50% glycerol, 0.5% BSA and 0.02% sodium azide. |
| Storage | Store at -20°C/1 year |

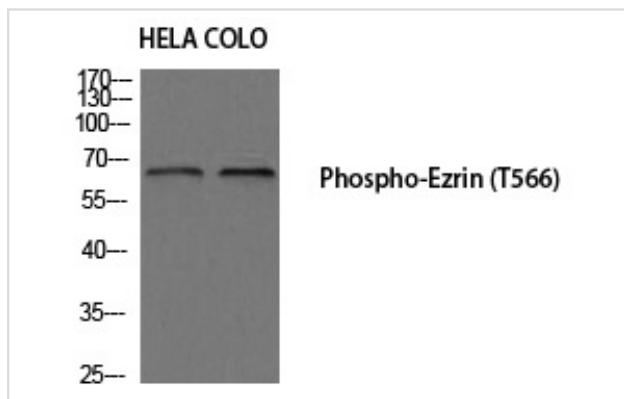
Application Details

Western blotting: 1/500 - 1/2000

ELISA: 1/20000

Not yet tested in other applications

Images



Western blot analysis of HELA COLO using Phospho-Ezrin (T566) antibody.

Note: This product is for in vitro research use only