

FoxO3A (Phospho-Ser253) Polyclonal Antibody

Catalog No: #12199

Package Size: #12199-1 50ul #12199-2 100ul

Orders: order@signalwayantibody.comSupport: tech@signalwayantibody.com

Description

Product Name	FoxO3A (Phospho-Ser253) Polyclonal Antibody
Host Species	Rabbit
Clonality	Polyclonal
Purification	The antibody was affinity-purified from rabbit antiserum by affinity-chromatography using epitope-specific immunogen.
Applications	WB IHC IF ELISA
Species Reactivity	Hu Ms Rt
Specificity	Phospho-FoxO3A (S253) Polyclonal Antibody detects endogenous levels of FoxO3A protein only when phosphorylated at S253.
Immunogen Type	peptide
Immunogen Description	Synthesized peptide derived from human FoxO3A around the phosphorylation site of S253.
Target Name	FoxO3A
Modification	Phospho
Other Names	FOXO3; FKHL1; FOXO3A; Forkhead box protein O3; AF6q21 protein; Forkhead in rhabdomyosarcoma-like 1
Accession No.	Swiss-Prot: O43524NCBI Gene ID: 2309
Uniprot	O43524
GeneID	2309;
Target Species	human
SDS-PAGE MW	71kd
Concentration	1mg/ml
Formulation	Liquid in PBS containing 50% glycerol, 0.5% BSA and 0.02% sodium azide.
Storage	Store at -20°C/1 year

Application Details

Western blotting: 1/500 - 1/2000

Immunohistochemistry: 1/100 - 1/300

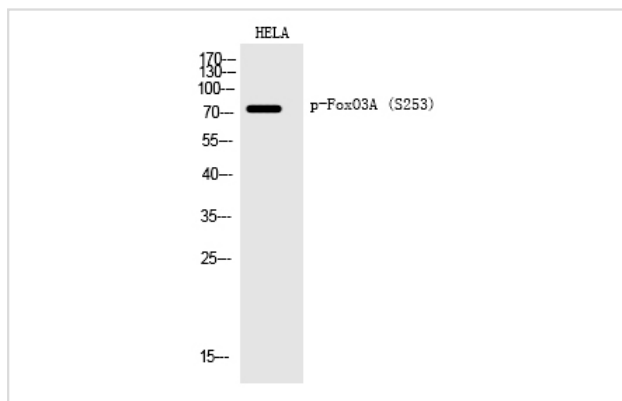
Immunofluorescence: 1/200 - 1/1000

ELISA: 1/20000

Not yet tested in other applications

Images

Western Blot analysis of HELA cells using Phospho-FoxO3A (S253) Polyclonal Antibody



Note: This product is for in vitro research use only