

Integrin β 1 (Phospho-Thr788) Polyclonal Antibody

Catalog No: #12203

Package Size: #12203-1 50ul #12203-2 100ul

Orders: order@signalwayantibody.comSupport: tech@signalwayantibody.com

Description

Product Name	Integrin β 1 (Phospho-Thr788) Polyclonal Antibody
Host Species	Rabbit
Clonality	Polyclonal
Purification	The antibody was affinity-purified from rabbit antiserum by affinity-chromatography using epitope-specific immunogen.
Applications	WB IHC ELISA
Species Reactivity	Hu Ms Rt
Specificity	Phospho-Integrin β 1 (T788) Polyclonal Antibody detects endogenous levels of Integrin β 1 protein only when phosphorylated at T788.
Immunogen Type	peptide
Immunogen Description	Synthesized peptide derived from human Integrin β 1 around the phosphorylation site of T788.
Target Name	Integrin β 1
Modification	Phospho
Other Names	ITGB1; FNRB; MDF2; MSK12; Integrin beta-1; Fibronectin receptor subunit beta; VLA-4 subunit beta; CD antigen CD29
Accession No.	Swiss-Prot: P05556NCBI Gene ID: 3688
Uniprot	P05556
GeneID	3688;
Target Species	human
SDS-PAGE MW	135kd
Concentration	1mg/ml
Formulation	Liquid in PBS containing 50% glycerol, 0.5% BSA and 0.02% sodium azide.
Storage	Store at -20°C/1 year

Application Details

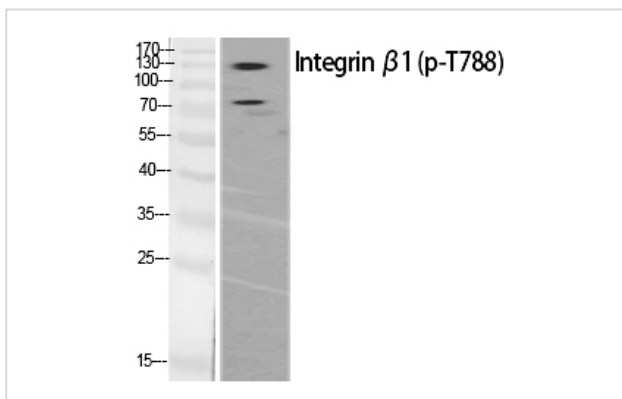
Western blotting: 1/500 - 1/2000

Immunohistochemistry: 1/100 - 1/300

ELISA: 1/20000

Not yet tested in other applications

Images



Western Blot analysis of various cells using Phospho-Integrin $\beta 1$ (T788) Polyclonal Antibody

Note: This product is for in vitro research use only