

IRS-1 (Phospho-Ser794) Polyclonal Antibody

Catalog No: #12204

Package Size: #12204-1 50ul #12204-2 100ul

Orders: order@signalwayantibody.comSupport: tech@signalwayantibody.com

Description

Product Name	IRS-1 (Phospho-Ser794) Polyclonal Antibody
Host Species	Rabbit
Clonality	Polyclonal
Purification	The antibody was affinity-purified from rabbit antiserum by affinity-chromatography using epitope-specific immunogen.
Applications	WB IHC IF
Species Reactivity	Hu Ms Rt
Specificity	Phospho-IRS-1 (S794) Polyclonal Antibody detects endogenous levels of IRS-1 protein only when phosphorylated at S794.
Immunogen Type	peptide
Immunogen Description	Synthesized peptide derived from human IRS-1 around the phosphorylation site of S794.
Target Name	IRS-1
Modification	Phospho
Other Names	IRS1; Insulin receptor substrate 1; IRS-1
Accession No.	Swiss-Prot: P35568NCBI Gene ID: 3667
Uniprot	P35568
GeneID	3667;
Target Species	human
SDS-PAGE MW	180kd
Concentration	1mg/ml
Formulation	Liquid in PBS containing 50% glycerol, 0.5% BSA and 0.02% sodium azide.
Storage	Store at -20°C/1 year

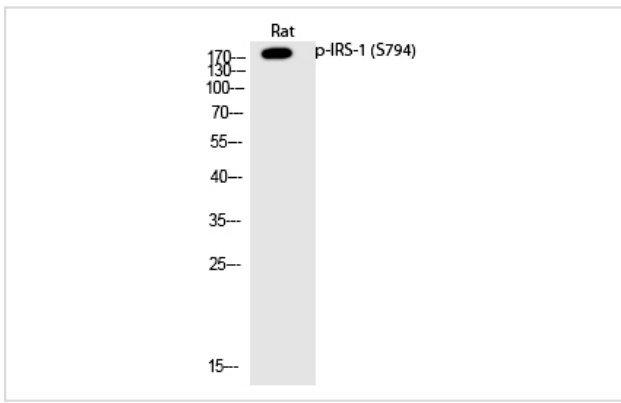
Application Details

Western blotting: 1/500 - 1/2000

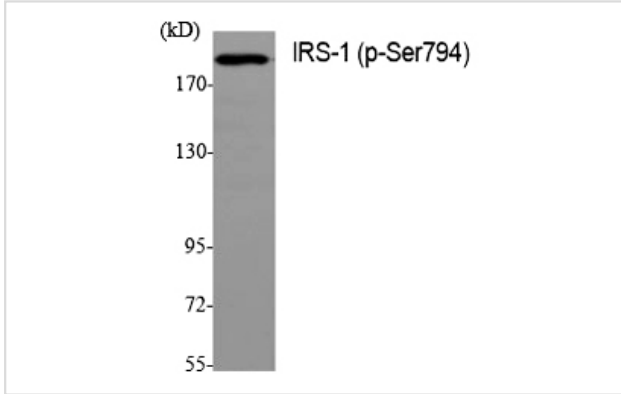
Immunohistochemistry: 1/100 - 1/300

Immunofluorescence: 1/200 - 1/1000

Images



Western Blot analysis of Rat cells using Phospho-IRS-1 (S794) Polyclonal Antibody



Western Blot analysis of various cells using Phospho-IRS-1 (S794) Polyclonal Antibody

Note: This product is for in vitro research use only