

MEF-2D (Phospho-Ser444) Polyclonal Antibody

Catalog No: #12205



Package Size: #12205-1 50ul #12205-2 100ul

Orders: order@signalwayantibody.comSupport: tech@signalwayantibody.com

Description

Product Name	MEF-2D (Phospho-Ser444) Polyclonal Antibody
Host Species	Rabbit
Clonality	Polyclonal
Purification	The antibody was affinity-purified from rabbit antiserum by affinity-chromatography using epitope-specific immunogen.
Applications	WB IHC ELISA
Species Reactivity	Hu Ms Rt
Specificity	Phospho-MEF-2D (S444) Polyclonal Antibody detects endogenous levels of MEF-2D protein only when phosphorylated at S444.
Immunogen Type	peptide
Immunogen Description	Synthesized peptide derived from human MEF-2D around the phosphorylation site of S444.
Target Name	MEF-2D
Modification	Phospho
Other Names	MEF2D; Myocyte-specific enhancer factor 2D
Accession No.	Swiss-Prot: Q14814NCBI Gene ID: 4209
Uniprot	Q14814
GeneID	4209;
Target Species	human
SDS-PAGE MW	55kd
Concentration	1mg/ml
Formulation	Liquid in PBS containing 50% glycerol, 0.5% BSA and 0.02% sodium azide.
Storage	Store at -20°C/1 year

Application Details

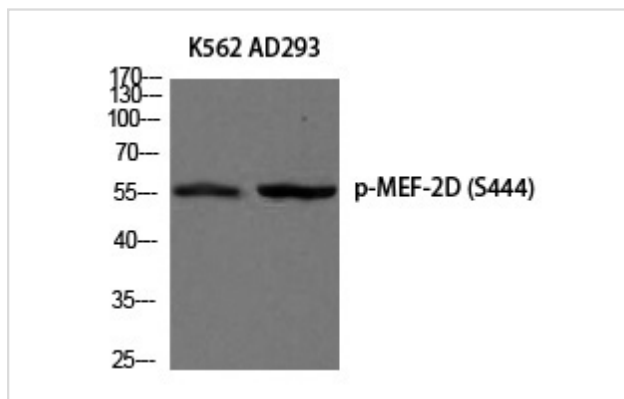
Western blotting: 1/500 - 1/2000

Immunohistochemistry: 1/100 - 1/300

ELISA: 1/10000

Not yet tested in other applications

Images



Western blot analysis of K562 AD293 using Phospho-MEF-2D (S444) antibody.

Note: This product is for in vitro research use only