

NF2 (Phospho-Ser518) Polyclonal Antibody

Catalog No: #12211

Package Size: #12211-1 50ul #12211-2 100ul

Orders: order@signalwayantibody.comSupport: tech@signalwayantibody.com

Description

Product Name	NF2 (Phospho-Ser518) Polyclonal Antibody
Host Species	Rabbit
Clonality	Polyclonal
Purification	The antibody was affinity-purified from rabbit antiserum by affinity-chromatography using epitope-specific immunogen.
Applications	WB IHC IF ELISA
Species Reactivity	Hu Ms Rt
Specificity	Phospho-NF2 (S518) Polyclonal Antibody detects endogenous levels of NF2 protein only when phosphorylated at S518.
Immunogen Type	peptide
Immunogen Description	Synthesized peptide derived from human NF2 around the phosphorylation site of S518.
Target Name	NF2
Modification	Phospho
Other Names	NF2; SCH; Merlin; Moesin-ezrin-radixin-like protein; Neurofibromin-2; Schwannomerlin; Schwannomin
Accession No.	Swiss-Prot: P35240NCBI Gene ID: 4771
Uniprot	P35240
GeneID	4771;
Target Species	human
SDS-PAGE MW	70kd
Concentration	1mg/ml
Formulation	Liquid in PBS containing 50% glycerol, 0.5% BSA and 0.02% sodium azide.
Storage	Store at -20°C/1 year

Application Details

Western blotting: 1/500 - 1/2000

Immunohistochemistry: 1/100 - 1/300

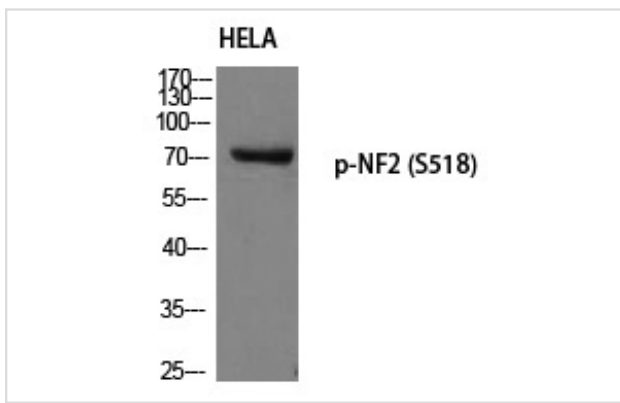
Immunofluorescence: 1/200 - 1/1000

ELISA: 1/5000

Not yet tested in other applications

Images

Western blot analysis of HELA using p-NF2 (S518) antibody.



Note: This product is for in vitro research use only