

## PDLIM5 (Phospho-Tyr251) Polyclonal Antibody

Catalog No: #12217



Package Size: #12217-1 50ul #12217-2 100ul

Orders: [order@signalwayantibody.com](mailto:order@signalwayantibody.com)Support: [tech@signalwayantibody.com](mailto:tech@signalwayantibody.com)

## Description

Product Name	PDLIM5 (Phospho-Tyr251) Polyclonal Antibody
Host Species	Rabbit
Clonality	Polyclonal
Purification	The antibody was affinity-purified from rabbit antiserum by affinity-chromatography using epitope-specific immunogen.
Applications	WB ELISA
Species Reactivity	Hu
Specificity	Phospho-PDLIM5 (Y251) Polyclonal Antibody detects endogenous levels of PDLIM5 protein only when phosphorylated at Y251.
Immunogen Type	peptide
Immunogen Description	Synthesized peptide derived from human PDLIM5 around the phosphorylation site of Y251.
Target Name	PDLIM5
Modification	Phospho
Other Names	PDLIM5; ENH; L9; PDZ and LIM domain protein 5; Enigma homolog; Enigma-like PDZ and LIM domains protein
Accession No.	Swiss-Prot: Q96HC4NCBI Gene ID: 10611
Uniprot	Q96HC4
GeneID	10611;
Target Species	human
SDS-PAGE MW	64kd
Concentration	1mg/ml
Formulation	Liquid in PBS containing 50% glycerol, 0.5% BSA and 0.02% sodium azide.
Storage	Store at -20°C/1 year

## Application Details

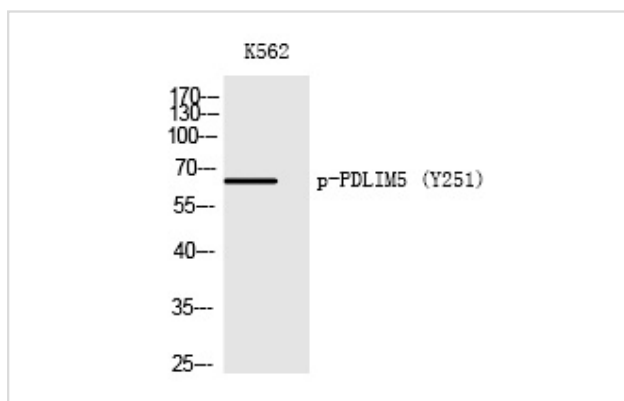
Western blotting: 1/500 - 1/2000

ELISA: 1/10000

Not yet tested in other applications

## Images

Western Blot analysis of K562 cells using Phospho-PDLIM5 (Y251) Polyclonal Antibody



Note: This product is for in vitro research use only