

Pragmin (Phospho-Tyr413) Polyclonal Antibody

Catalog No: #12219

Package Size: #12219-1 50ul #12219-2 100ul

Orders: order@signalwayantibody.comSupport: tech@signalwayantibody.com

Description

Product Name	Pragmin (Phospho-Tyr413) Polyclonal Antibody
Host Species	Rabbit
Clonality	Polyclonal
Purification	The antibody was affinity-purified from rabbit antiserum by affinity-chromatography using epitope-specific immunogen.
Applications	WB IHC ELISA
Species Reactivity	Hu Ms Rt
Specificity	Phospho-Pragmin (Y413) Polyclonal Antibody detects endogenous levels of Pragmin protein only when phosphorylated at Y413.
Immunogen Type	peptide
Immunogen Description	Synthesized peptide derived from human Pragmin around the phosphorylation site of Y413.
Target Name	Pragmin
Modification	Phospho
Other Names	SGK223; Tyrosine-protein kinase Sgk223; Sugen kinase 223
Accession No.	Swiss-Prot: Q86YV5NCBI Gene ID: 157285
Uniprot	Q86YV5
GeneID	157285;
Target Species	human
SDS-PAGE MW	175kd
Concentration	1mg/ml
Formulation	Liquid in PBS containing 50% glycerol, 0.5% BSA and 0.02% sodium azide.
Storage	Store at -20°C/1 year

Application Details

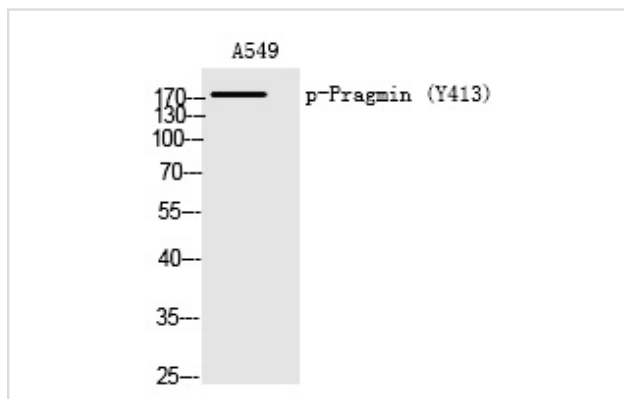
Western blotting: 1/500 - 1/2000

Immunohistochemistry: 1/100 - 1/300

ELISA: 1/10000

Not yet tested in other applications

Images



Western Blot analysis of A549 cells using Phospho-Fragmin (Y413) Polyclonal Antibody

Note: This product is for in vitro research use only