

## SGK1 (Phospho-Ser422) Polyclonal Antibody

Catalog No: #12220



Package Size: #12220-1 50ul #12220-2 100ul

Orders: [order@signalwayantibody.com](mailto:order@signalwayantibody.com)Support: [tech@signalwayantibody.com](mailto:tech@signalwayantibody.com)

## Description

Product Name	SGK1 (Phospho-Ser422) Polyclonal Antibody
Host Species	Rabbit
Clonality	Polyclonal
Purification	The antibody was affinity-purified from rabbit antiserum by affinity-chromatography using epitope-specific immunogen.
Applications	WB IHC ELISA
Species Reactivity	Hu Ms Rt
Specificity	Phospho-SGK1 (S422) Polyclonal Antibody detects endogenous levels of SGK1 protein only when phosphorylated at S422.
Immunogen Type	peptide
Immunogen Description	Synthesized peptide derived from human SGK1 around the phosphorylation site of S422.
Target Name	SGK1
Modification	Phospho
Other Names	SGK1; SGK; Serine/threonine-protein kinase Sgk1; Serum/glucocorticoid-regulated kinase 1
Accession No.	Swiss-Prot: O00141NCBI Gene ID: 6446
Uniprot	O00141
GeneID	6446;
Target Species	human
SDS-PAGE MW	57kd
Concentration	1mg/ml
Formulation	Liquid in PBS containing 50% glycerol, 0.5% BSA and 0.02% sodium azide.
Storage	Store at -20°C/1 year

## Application Details

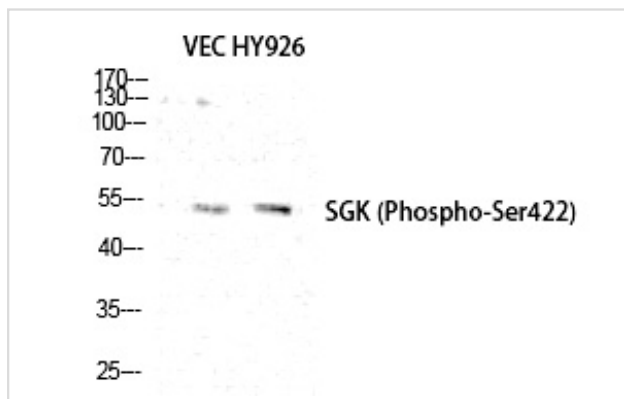
Western blotting: 1/500 - 1/2000

Immunohistochemistry: 1/100 - 1/300

ELISA: 1/40000

Not yet tested in other applications

## Images



Western Blot analysis of VEC HY926 cells using Phospho-SGK1 (S422) Polyclonal Antibody

---

Note: This product is for in vitro research use only