

RUNX1 (Phospho-Ser249) Polyclonal Antibody

Catalog No: #12224

Package Size: #12224-1 50ul #12224-2 100ul

Orders: order@signalwayantibody.comSupport: tech@signalwayantibody.com

Description

Product Name	RUNX1 (Phospho-Ser249) Polyclonal Antibody
Host Species	Rabbit
Clonality	Polyclonal
Purification	The antibody was affinity-purified from rabbit antiserum by affinity-chromatography using epitope-specific immunogen.
Applications	WB ELISA
Species Reactivity	Hu Ms Rt
Specificity	Phospho-RUNX1 (S249) Polyclonal Antibody detects endogenous levels of RUNX1 protein only when phosphorylated at S249.
Immunogen Type	peptide
Immunogen Description	Synthesized peptide derived from human RUNX1 around the phosphorylation site of S249.
Target Name	RUNX1
Modification	Phospho
Other Names	RUNX1; AML1; CBFA2; Runt-related transcription factor 1; Acute myeloid leukemia 1 protein; Core-binding factor subunit alpha-2; CBF-alpha-2; Oncogene AML-1; Polyomavirus enhancer-binding protein 2 alpha B subunit; PEA2-alpha B; PEBP2-alpha
Accession No.	Swiss-Prot: Q01196NCBI Gene ID: 861
Uniprot	Q01196
GeneID	861;
Target Species	human
SDS-PAGE MW	49kd
Concentration	1mg/ml
Formulation	Liquid in PBS containing 50% glycerol, 0.5% BSA and 0.02% sodium azide.
Storage	Store at -20°C/1 year

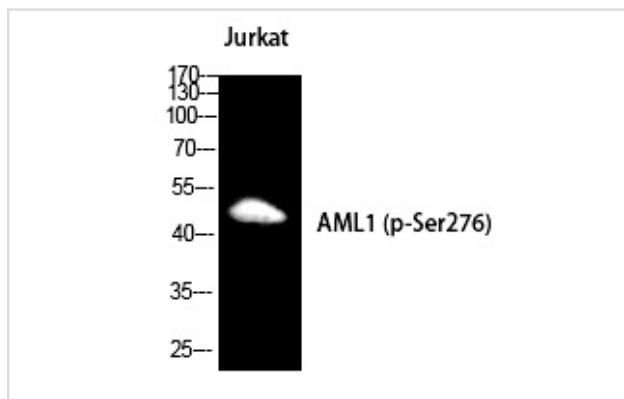
Application Details

Western blotting: 1/500 - 1/2000

ELISA: 1/5000

Not yet tested in other applications

Images



Western Blot analysis of Jurkat cells using Phospho-RUNX1 (S249) Polyclonal Antibody

Note: This product is for in vitro research use only