

FoxO1/3 (Phospho-Ser322/Ser325) Polyclonal Antibody

Catalog No: #12228

Orders: order@signalwayantibody.comSupport: tech@signalwayantibody.com

Package Size: #12228-1 50ul #12228-2 100ul

Description

Product Name	FoxO1/3 (Phospho-Ser322/Ser325) Polyclonal Antibody
Host Species	Rabbit
Clonality	Polyclonal
Purification	The antibody was affinity-purified from rabbit antiserum by affinity-chromatography using epitope-specific immunogen.
Applications	WB IHC ELISA
Species Reactivity	Hu Ms Rt
Specificity	Phospho-FoxO1/3 (S322/S325) Polyclonal Antibody detects endogenous levels of FoxO1/3 protein only when phosphorylated at S322/S325.
Immunogen Type	peptide
Immunogen Description	Synthesized peptide derived from human FoxO1/3 around the phosphorylation site of S322/S325.
Target Name	FoxO1/3
Modification	Phospho
Other Names	FOXO1; FKHR; FOXO1A; Forkhead box protein O1; Forkhead box protein O1A; Forkhead in rhabdomyosarcoma; FOXO3; FKHL1; FOXO3A; Forkhead box protein O3; AF6q21 protein; Forkhead in rhabdomyosarcoma-like 1
Accession No.	Swiss-Prot: Q12778/O43524NCBI Gene ID: 2308
Uniprot	Q12778
GeneID	2308;
Target Species	human
SDS-PAGE MW	97kd
Concentration	1mg/ml
Formulation	Liquid in PBS containing 50% glycerol, 0.5% BSA and 0.02% sodium azide.
Storage	Store at -20°C/1 year

Application Details

Western blotting: 1/500 - 1/2000

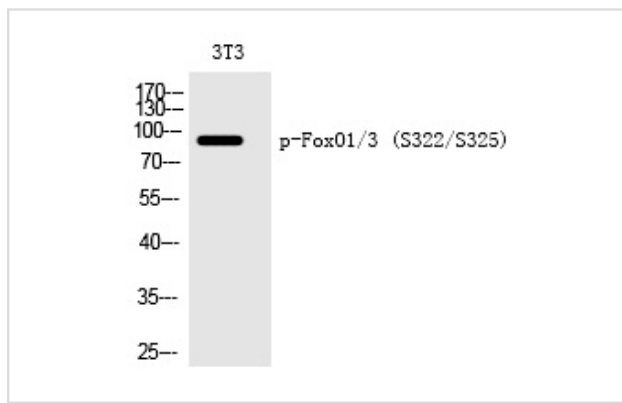
Immunohistochemistry: 1/100 - 1/300

ELISA: 1/5000

Not yet tested in other applications

Images

Western Blot analysis of 3T3 cells using Phospho-FoxO1/3 (S322/S325) Polyclonal Antibody



Note: This product is for in vitro research use only