

Met (Phospho-Tyr1356) Polyclonal Antibody

Catalog No: #12230



Package Size: #12230-1 50ul #12230-2 100ul

Orders: order@signalwayantibody.comSupport: tech@signalwayantibody.com

Description

| | |
|-----------------------|--|
| Product Name | Met (Phospho-Tyr1356) Polyclonal Antibody |
| Host Species | Rabbit |
| Clonality | Polyclonal |
| Purification | The antibody was affinity-purified from rabbit antiserum by affinity-chromatography using epitope-specific immunogen. |
| Applications | WB ELISA |
| Species Reactivity | Hu Ms Rt |
| Specificity | Phospho-Met (Y1356) Polyclonal Antibody detects endogenous levels of Met protein only when phosphorylated at Y1356. |
| Immunogen Type | peptide |
| Immunogen Description | Synthesized peptide derived from human Met around the phosphorylation site of Y1356. |
| Target Name | Met |
| Modification | Phospho |
| Other Names | MET; Hepatocyte growth factor receptor; HGF receptor; HGF/SF receptor; Proto-oncogene c-Met; Scatter factor receptor; SF receptor; Tyrosine-protein kinase Met |
| Accession No. | Swiss-Prot: P08581NCBI Gene ID: 4233 |
| Uniprot | P08581 |
| GeneID | 4233; |
| Target Species | human |
| SDS-PAGE MW | 160kd |
| Concentration | 1mg/ml |
| Formulation | Liquid in PBS containing 50% glycerol, 0.5% BSA and 0.02% sodium azide. |
| Storage | Store at -20°C/1 year |

Application Details

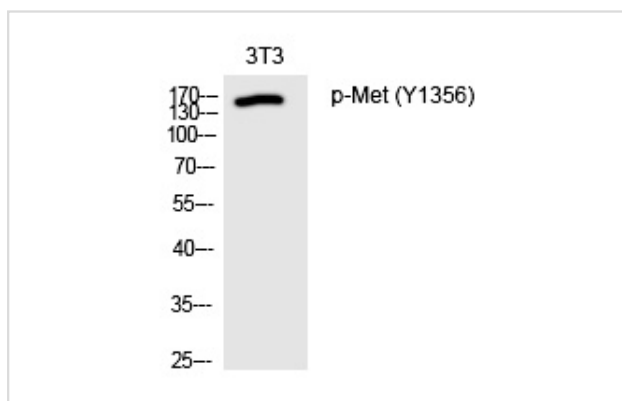
Western blotting: 1/500 - 1/2000

ELISA: 1/10000

Not yet tested in other applications

Images

Western Blot analysis of 3T3 cells using Phospho-Met (Y1356) Polyclonal Antibody



Note: This product is for in vitro research use only