

## SHIP-1 (Phospho-Tyr1021) Polyclonal Antibody

Catalog No: #12235



Package Size: #12235-1 50ul #12235-2 100ul

Orders: [order@signalwayantibody.com](mailto:order@signalwayantibody.com)Support: [tech@signalwayantibody.com](mailto:tech@signalwayantibody.com)

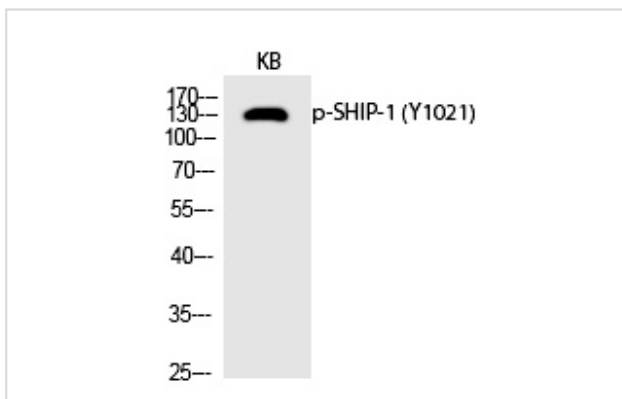
## Description

Product Name	SHIP-1 (Phospho-Tyr1021) Polyclonal Antibody
Host Species	Rabbit
Clonality	Polyclonal
Purification	The antibody was affinity-purified from rabbit antiserum by affinity-chromatography using epitope-specific immunogen.
Applications	WB
Species Reactivity	Hu Ms Rt
Specificity	Phospho-SHIP-1 (Y1021) Polyclonal Antibody detects endogenous levels of SHIP-1 protein only when phosphorylated at Y1021.
Immunogen Type	peptide
Immunogen Description	Synthesized peptide derived from human SHIP-1 around the phosphorylation site of Y1021.
Target Name	SHIP-1
Modification	Phospho
Other Names	INPP5D; SHIP; SHIP1; Phosphatidylinositol 3; 4,5-trisphosphate 5-phosphatase 1; Inositol polyphosphate-5-phosphatase of 145 kDa; SIP-145; SH2 domain-containing inositol 5'-phosphatase 1; SH2 domain-containing inositol phosphatase 1; SHIP-1;
Accession No.	Swiss-Prot: Q92835NCBI Gene ID: 3635
Uniprot	Q92835
GeneID	3635;
Target Species	human
SDS-PAGE MW	133kd
Concentration	1mg/ml
Formulation	Liquid in PBS containing 50% glycerol, 0.5% BSA and 0.02% sodium azide.
Storage	Store at -20°C/1 year

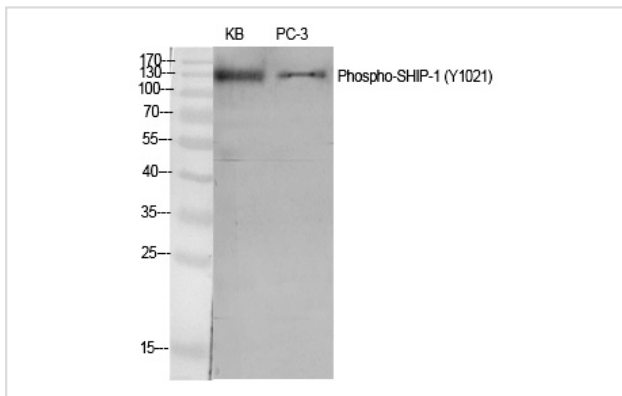
## Application Details

Western blotting: 1/500 - 1/2000

## Images



Western Blot analysis of KB cells using Phospho-SHIP-1 (Y1021) Polyclonal Antibody



Western Blot analysis of KB PC-3 cells using Phospho-SHIP-1 (Y1021) Polyclonal Antibody

---

Note: This product is for in vitro research use only