

PKD2 (Phospho-Ser876) Polyclonal Antibody

Catalog No: #12236

Package Size: #12236-1 50ul #12236-2 100ul

Orders: order@signalwayantibody.comSupport: tech@signalwayantibody.com

Description

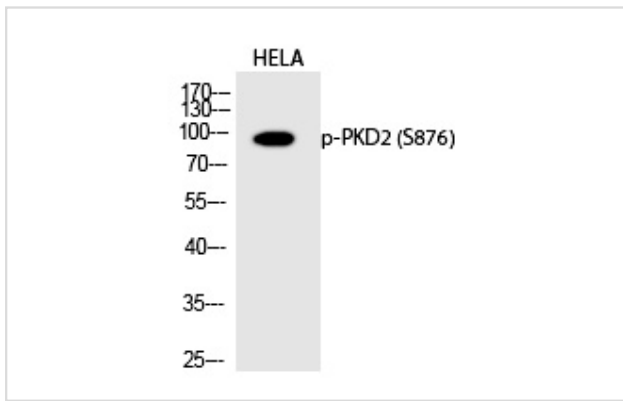
| | |
|-----------------------|---|
| Product Name | PKD2 (Phospho-Ser876) Polyclonal Antibody |
| Host Species | Rabbit |
| Clonality | Polyclonal |
| Purification | The antibody was affinity-purified from rabbit antiserum by affinity-chromatography using epitope-specific immunogen. |
| Applications | WB IHC |
| Species Reactivity | Hu Ms Rt |
| Specificity | Phospho-PKD2 (S876) Polyclonal Antibody detects endogenous levels of PKD2 protein only when phosphorylated at S876. |
| Immunogen Type | peptide |
| Immunogen Description | Synthesized peptide derived from human PKD2 around the phosphorylation site of S876. |
| Target Name | PKD2 |
| Modification | Phospho |
| Other Names | PRKD2; PKD2; HSPC187; Serine/threonine-protein kinase D2; nPKC-D2 |
| Accession No. | Swiss-Prot: Q9BZL6NCBI Gene ID: 25865 |
| Uniprot | Q9BZL6 |
| GeneID | 25865; |
| Target Species | human |
| SDS-PAGE MW | 96kd |
| Concentration | 1mg/ml |
| Formulation | Liquid in PBS containing 50% glycerol, 0.5% BSA and 0.02% sodium azide. |
| Storage | Store at -20°C/1 year |

Application Details

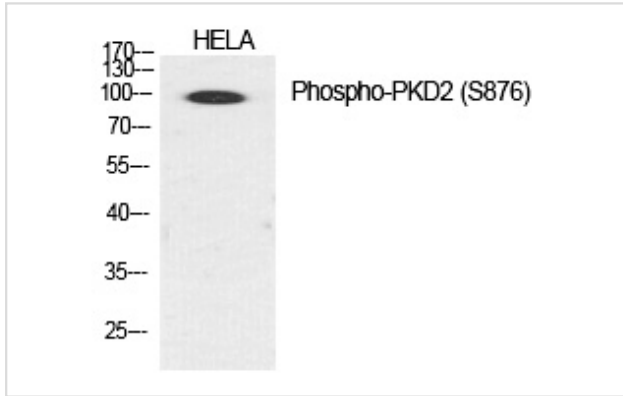
Western blotting: 1/500 - 1/2000

Immunohistochemistry: 1/100 - 1/300

Images



Western Blot analysis of HELA cells using Phospho-PKD2 (S876) Polyclonal Antibody



Western Blot analysis of HELA cells using Phospho-PKD2 (S876) Polyclonal Antibody

Note: This product is for in vitro research use only