

Caspase-9 (Phospho-Ser196) Polyclonal Antibody

Catalog No: #12238

Package Size: #12238-1 50ul #12238-2 100ul

Orders: order@signalwayantibody.comSupport: tech@signalwayantibody.com

Description

| | |
|-----------------------|---|
| Product Name | Caspase-9 (Phospho-Ser196) Polyclonal Antibody |
| Host Species | Rabbit |
| Clonality | Polyclonal |
| Purification | The antibody was affinity-purified from rabbit antiserum by affinity-chromatography using epitope-specific immunogen. |
| Applications | WB IHC |
| Species Reactivity | Hu |
| Specificity | Phospho-Caspase-9 (S196) Polyclonal Antibody detects endogenous levels of Caspase-9 protein only when phosphorylated at S196. |
| Immunogen Type | peptide |
| Immunogen Description | Synthesized peptide derived from human Caspase-9 around the phosphorylation site of S196. |
| Target Name | Caspase-9 |
| Modification | Phospho |
| Other Names | CASP9; MCH6; Caspase-9; CASP-9; Apoptotic protease Mch-6; Apoptotic protease-activating factor 3; APAF-3; ICE-like apoptotic protease 6; ICE-LAP6 |
| Accession No. | Swiss-Prot: P55211NCBI Gene ID: 842 |
| Uniprot | P55211 |
| GeneID | 842; |
| Target Species | human |
| SDS-PAGE MW | 50kd |
| Concentration | 1mg/ml |
| Formulation | Liquid in PBS containing 50% glycerol, 0.5% BSA and 0.02% sodium azide. |
| Storage | Store at -20°C/1 year |

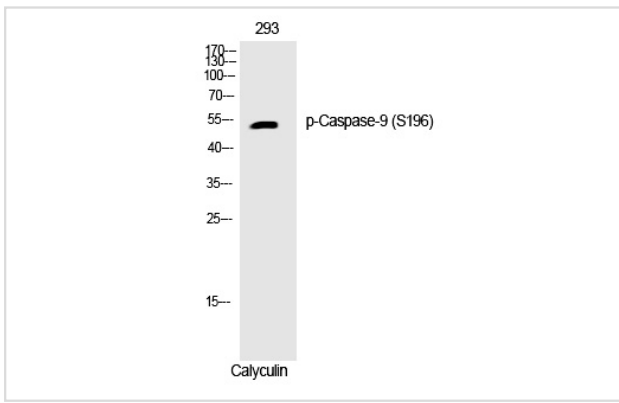
Application Details

Western blotting: 1/500 - 1/2000

Immunohistochemistry: 1/100 - 1/300

Images

Western Blot analysis of 293 cells using Phospho-Caspase-9 (S196) Polyclonal Antibody



Note: This product is for in vitro research use only