

Smad2/3 (Phospho-Thr8) Polyclonal Antibody

Catalog No: #12241

Package Size: #12241-1 50ul #12241-2 100ul

Orders: order@signalwayantibody.comSupport: tech@signalwayantibody.com

Description

| | |
|-----------------------|---|
| Product Name | Smad2/3 (Phospho-Thr8) Polyclonal Antibody |
| Host Species | Rabbit |
| Clonality | Polyclonal |
| Purification | The antibody was affinity-purified from rabbit antiserum by affinity-chromatography using epitope-specific immunogen. |
| Applications | WB ELISA |
| Species Reactivity | Hu Ms Rt |
| Specificity | Phospho-Smad2/3 (T8) Polyclonal Antibody detects endogenous levels of Smad2/3 protein only when phosphorylated at T8. |
| Immunogen Type | peptide |
| Immunogen Description | Synthesized peptide derived from human Smad2/3 around the phosphorylation site of T8. |
| Target Name | Smad2/3 |
| Modification | Phospho |
| Other Names | SMAD2; MADH2; MADR2; Mothers against decapentaplegic homolog 2; MAD homolog 2; Mothers against DPP homolog 2; JV18-1; Mad-related protein 2; hMAD-2; SMAD family member 2; SMAD 2; Smad2; hSMAD2; SMAD3; MADH3; Mothers against decapentaplegic |
| Accession No. | Swiss-Prot: Q15796/P84022NCBI Gene ID: 4087/4088 |
| Uniprot | Q15796 |
| GeneID | 4087; |
| Target Species | human |
| SDS-PAGE MW | 48kd |
| Concentration | 1mg/ml |
| Formulation | Liquid in PBS containing 50% glycerol, 0.5% BSA and 0.02% sodium azide. |
| Storage | Store at -20°C/1 year |

Application Details

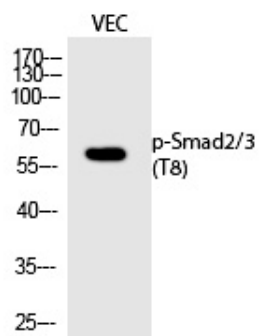
Western blotting: 1/500 - 1/2000

ELISA: 1/10000

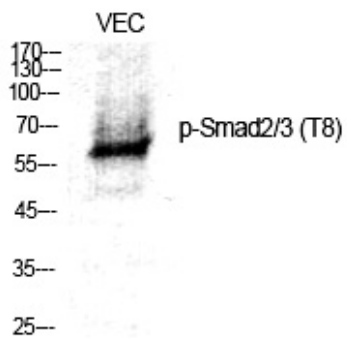
Not yet tested in other applications

Images

Western Blot analysis of VEC cells using Phospho-Smad2/3 (T8) Polyclonal Antibody



Western Blot analysis of VEC cells using Phospho-Smad2/3 (T8) Polyclonal Antibody



Note: This product is for in vitro research use only