

Eg5 (Phospho-Thr926) Polyclonal Antibody

Catalog No: #12244

Package Size: #12244-1 50ul #12244-2 100ul

Orders: order@signalwayantibody.comSupport: tech@signalwayantibody.com

Description

Product Name	Eg5 (Phospho-Thr926) Polyclonal Antibody
Host Species	Rabbit
Clonality	Polyclonal
Purification	The antibody was affinity-purified from rabbit antiserum by affinity-chromatography using epitope-specific immunogen.
Applications	WB ELISA
Species Reactivity	Hu
Specificity	Phospho-Eg5 (T926) Polyclonal Antibody detects endogenous levels of Eg5 protein only when phosphorylated at T926.
Immunogen Type	peptide
Immunogen Description	Synthesized peptide derived from human Eg5 around the phosphorylation site of T926.
Target Name	Eg5
Modification	Phospho
Other Names	KIF11; EG5; KNSL1; TRIP5; Kinesin-like protein KIF11; Kinesin-like protein 1; Kinesin-like spindle protein HKSP; Kinesin-related motor protein Eg5; Thyroid receptor-interacting protein 5; TR-interacting protein 5; TRIP-5
Accession No.	Swiss-Prot: P52732NCBI Gene ID: 3832
Uniprot	P52732
GeneID	3832;
Target Species	human
SDS-PAGE MW	119kd
Concentration	1mg/ml
Formulation	Liquid in PBS containing 50% glycerol, 0.5% BSA and 0.02% sodium azide.
Storage	Store at -20°C/1 year

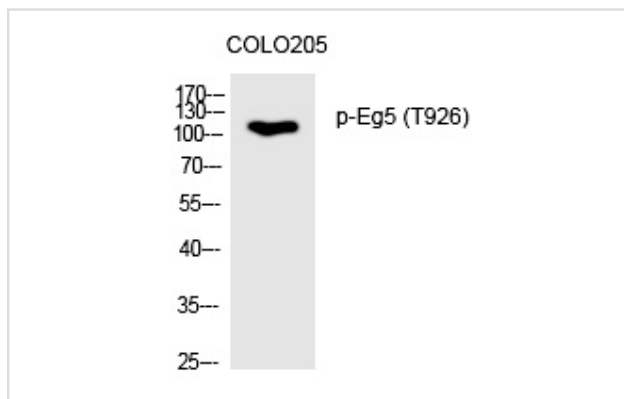
Application Details

Western blotting: 1/500 - 1/2000

ELISA: 1/5000

Not yet tested in other applications

Images



Western Blot analysis of COLO205 cells using Phospho-Eg5 (T926) Polyclonal Antibody

Note: This product is for in vitro research use only