

## KIF20A (Phospho-Ser528) Polyclonal Antibody

Catalog No: #12245

Package Size: #12245-1 50ul #12245-2 100ul

Orders: [order@signalwayantibody.com](mailto:order@signalwayantibody.com)Support: [tech@signalwayantibody.com](mailto:tech@signalwayantibody.com)

## Description

Product Name	KIF20A (Phospho-Ser528) Polyclonal Antibody
Host Species	Rabbit
Clonality	Polyclonal
Purification	The antibody was affinity-purified from rabbit antiserum by affinity-chromatography using epitope-specific immunogen.
Applications	WB IHC ELISA
Species Reactivity	Hu
Specificity	Phospho-KIF20A (S528) Polyclonal Antibody detects endogenous levels of KIF20A protein only when phosphorylated at S528.
Immunogen Type	peptide
Immunogen Description	Synthesized peptide derived from human KIF20A around the phosphorylation site of S528.
Target Name	KIF20A
Modification	Phospho
Other Names	KIF20A; MKLP2; RAB6KIFL; Kinesin-like protein KIF20A; GG10_2; Mitotic kinesin-like protein 2; MKlp2; Rab6-interacting kinesin-like protein; Rabkinesin-6
Accession No.	Swiss-Prot: O95235NCBI Gene ID: 10112
Uniprot	O95235
GeneID	10112;
Target Species	human
SDS-PAGE MW	100kd
Concentration	1mg/ml
Formulation	Liquid in PBS containing 50% glycerol, 0.5% BSA and 0.02% sodium azide.
Storage	Store at -20°C/1 year

## Application Details

Western blotting: 1/500 - 1/2000

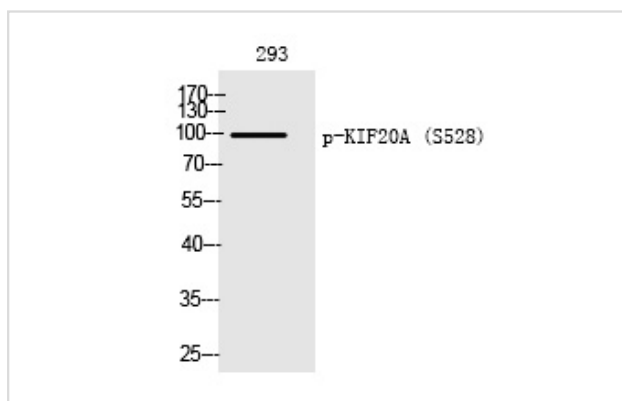
Immunohistochemistry: 1/100 - 1/300

ELISA: 1/5000

Not yet tested in other applications

## Images

Western Blot analysis of 293 cells using Phospho-KIF20A (S528) Polyclonal Antibody



Note: This product is for in vitro research use only