

CD40 (Phospho-Thr254) Polyclonal Antibody

Catalog No: #12246

Package Size: #12246-1 50ul #12246-2 100ul

Orders: order@signalwayantibody.comSupport: tech@signalwayantibody.com

Description

Product Name	CD40 (Phospho-Thr254) Polyclonal Antibody
Host Species	Rabbit
Clonality	Polyclonal
Purification	The antibody was affinity-purified from rabbit antiserum by affinity-chromatography using epitope-specific immunogen.
Applications	WB ELISA
Species Reactivity	Hu Ms
Specificity	Phospho-CD40 (T254) Polyclonal Antibody detects endogenous levels of CD40 protein only when phosphorylated at T254.
Immunogen Type	peptide
Immunogen Description	Synthesized peptide derived from human CD40 around the phosphorylation site of T254.
Target Name	CD40
Modification	Phospho
Other Names	CD40; TNFRSF5; Tumor necrosis factor receptor superfamily member 5; B-cell surface antigen CD40; Bp50; CD40L receptor; CDw40; CD antigen CD40
Accession No.	Swiss-Prot: P25942NCBI Gene ID: 958
Uniprot	P25942
GeneID	958;
Target Species	human
SDS-PAGE MW	30kd
Concentration	1mg/ml
Formulation	Liquid in PBS containing 50% glycerol, 0.5% BSA and 0.02% sodium azide.
Storage	Store at -20°C/1 year

Application Details

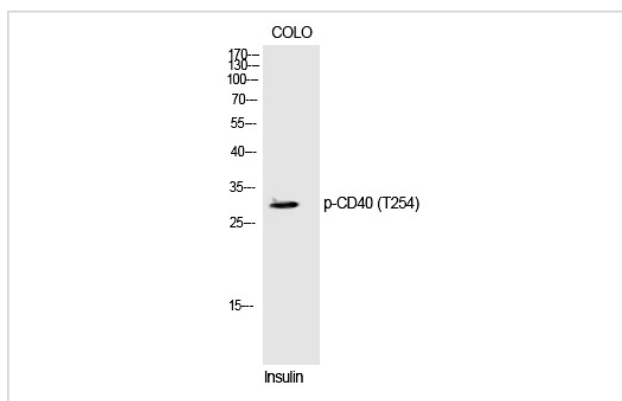
Western blotting: 1/500 - 1/2000

ELISA: 1/5000

Not yet tested in other applications

Images

Western Blot analysis of COLO cells using Phospho-CD40 (T254) Polyclonal Antibody



Note: This product is for in vitro research use only