

Casein Kinase II α (Phospho-Tyr255) Polyclonal Antibody

Catalog No: #12247

Orders: order@signalwayantibody.com

Package Size: #12247-1 50ul #12247-2 100ul

Support: tech@signalwayantibody.com

Description

Product Name	Casein Kinase II α (Phospho-Tyr255) Polyclonal Antibody
Host Species	Rabbit
Clonality	Polyclonal
Purification	The antibody was affinity-purified from rabbit antiserum by affinity-chromatography using epitope-specific immunogen.
Applications	WB IHC ELISA
Species Reactivity	Hu Ms Rt
Specificity	Phospho-Casein Kinase II α (Y255) Polyclonal Antibody detects endogenous levels of Casein Kinase II α protein only when phosphorylated at Y255.
Immunogen Type	peptide
Immunogen Description	Synthesized peptide derived from human Casein Kinase II α around the phosphorylation site of Y255.
Target Name	Casein Kinase II α
Modification	Phospho
Other Names	CSNK2A1; CK2A1; Casein kinase II subunit alpha; CK II alpha
Accession No.	Swiss-Prot: P68400NCBI Gene ID: 1457
Uniprot	P68400
GeneID	1457;
Target Species	human
SDS-PAGE MW	45kd
Concentration	1mg/ml
Formulation	Liquid in PBS containing 50% glycerol, 0.5% BSA and 0.02% sodium azide.
Storage	Store at -20°C/1 year

Application Details

Western blotting: 1/500 - 1/2000

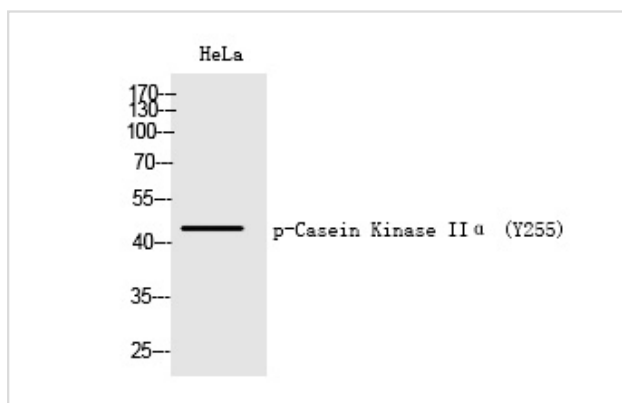
Immunohistochemistry: 1/100 - 1/300

ELISA: 1/10000

Not yet tested in other applications

Images

Western Blot analysis of HeLa cells using Phospho-Casein Kinase II α (Y255) Polyclonal Antibody



Note: This product is for in vitro research use only